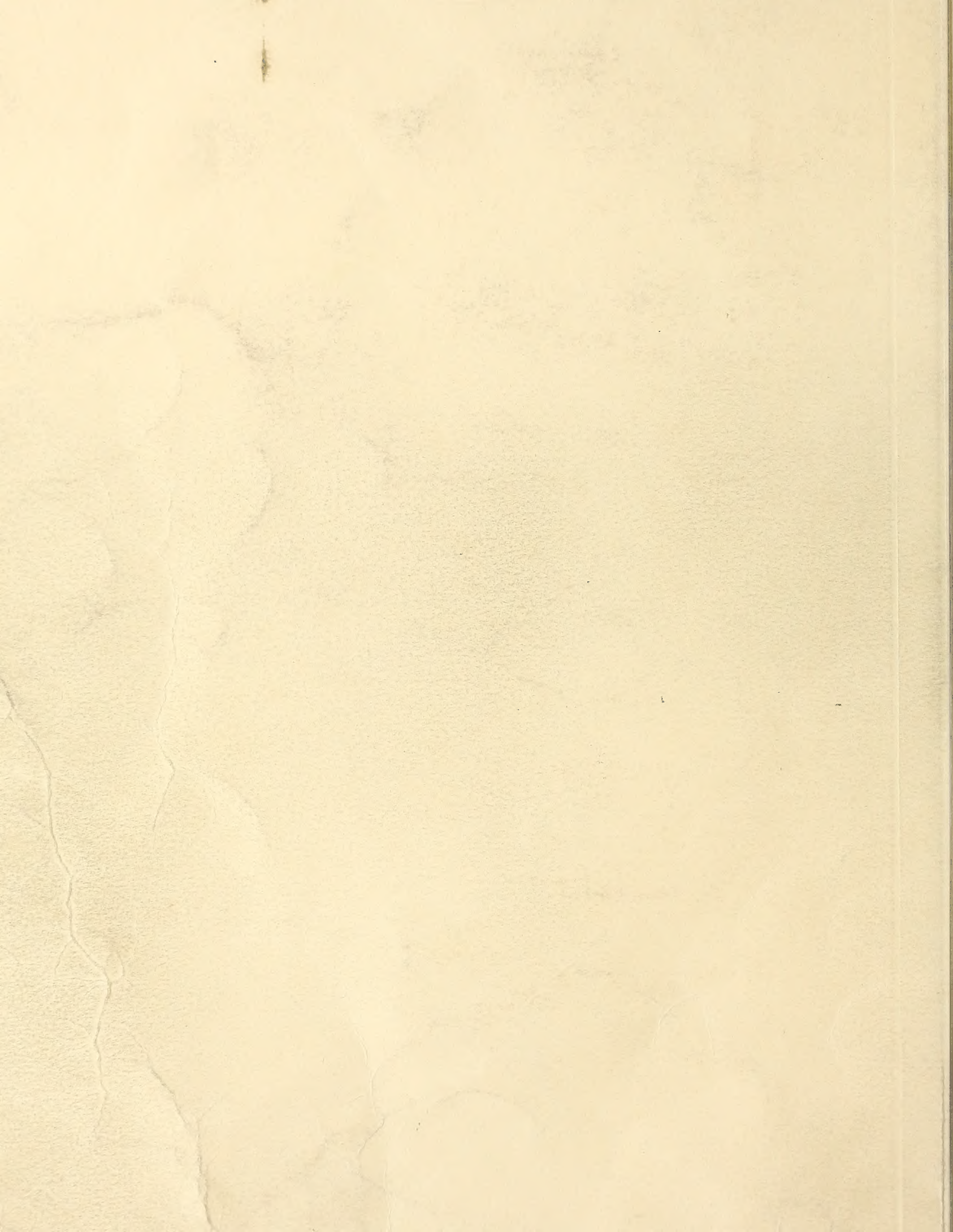


Historic, archived document

Do not assume content reflects current scientific knowledge, policies, or practices.



62.19

Hastings

LIBRARY RECEIVED
NOV 2 1949
U.S. Department of Agriculture

NURSERY ANNUAL

Winter 1948-49

H. G. HASTINGS CO., ATLANTA 2, GEORGIA



AFTERGLOW FLOWERING QUINCE

(Patent Applied For)

Fascinating new huge semi-double white flowers with dainty pink edging. Greet the Spring with this earliest flower which also may be cut and forced into winter bloom indoors. Obtainable only from Hastings' in the East, this new colorful introduction is a sensational find and should be in every Southern garden where it grows so easily and flowers so beautifully.

Strong plants. \$2.95 each; 3 for \$7.50. Delivered.
Be the first to have Afterglow in your neighborhood!

NEW ORIENT PEAR

Absolutely Delicious and Blight-Resistant!

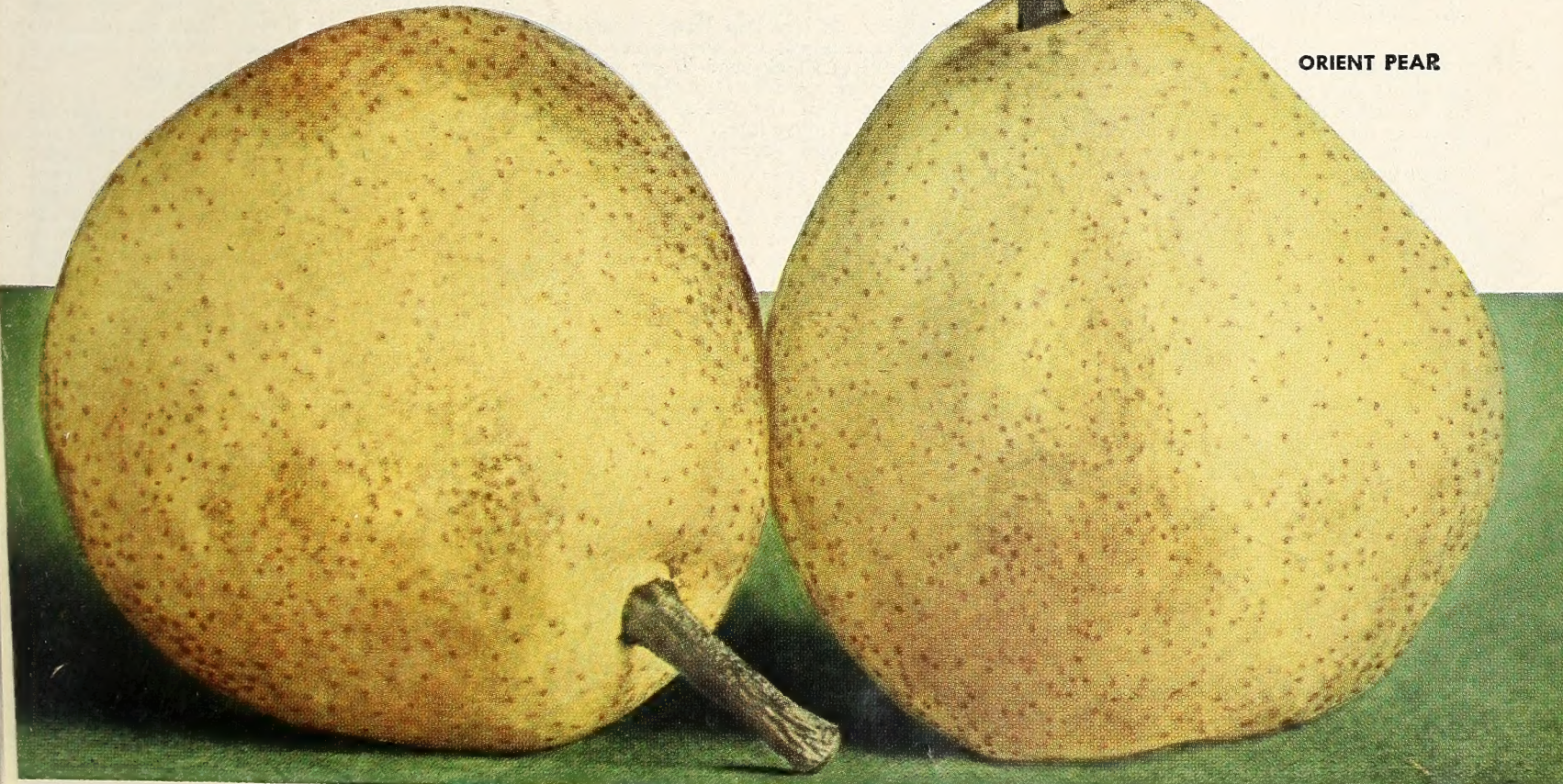
For years breeders have been seeking a genuine blight-resistant pear for the South that was comparable in fresh eating quality to the market pears from other sections. The new Orient pear is just this! Developed by the Tenn. Exp. Station. We obtained stock from them to insure only the genuine trees for you.

Large size fruit borne freely on vigorous trees ripen to a mellow deliciousness comparable to the finest table pears. Really, every Southern home should have several of these trees! Very resistant.

Strong, well rooted trees \$3.00 each; 3 for \$7.50; 12 for \$24.00. Delivered.

AFTERGLOW QUINCE

ORIENT PEAR



SPRAYING AND PRUNING

Plant, Prune, Spray Right for Fine Fruits and Flowers.
Hastings' is Headquarters for Materials



APPLES. *Pruning.* Plant young trees with strong terminal buds. Select 3 buds or small branches a foot apart around trunk, lowest bud at height desired for lowest limb. Other buds are cut out with sharp knife. If other branches develop, cut them off the following spring. As desired branches develop after the first year, select buds to retain as on the whip, pointing in different directions for balance. Keep other branches off by pruning close to limb or trunk. Besides, prune out all dead, diseased, weak branches and any which would interfere with more desirable branches each spring.

Spraying. For home orchards 4 or 5 sprays are needed each year to prevent fungous and insect infestations, as follows: 1. Dormant spray. This delayed spray is made when fruit buds become silvery colored and before young leaves develop. Use Lime-Sulphur with addition of Black-Leaf 40, nicotine sulphate, as directed on packages, against scales, soap, red mite and aphid. 2. Pink bud spray. Use when fruit buds show pink color, Pan Apple Spray against scab, curculio, worms and caterpillars. 3. Calyx spray. Use when petals drop and before calyx closes. Pan Apple Spray as on package directions. 4. Use same spray 10 days later. 5. Same spray 15 days later. If only 2 sprayings are made a year, use numbers 1 and 3 as most important.

PEACHES. *Pruning.* Plant small trees and prune to 3 or 4 chosen buds or branches 8 to 12 inches apart on trunk and pointing in different directions to avoid later splitting. Prune back the main stem above chosen top bud or branch. The second year, before buds swell, cut off all shoots not needed for the tree's framework, keeping tree rather low and open in center. After bearing begins, cut back new shoots in midwinter at least half way.

Spraying. The general program is 4 sprayings. 1. In winter use a strong Lime-Sulphur spray according to package instructions against leaf-curl and San Jose scale.

2. After petals drop and husks split from young fruits, use Pan Peach Spray against scab, brown rot and curculio. 3. Repeat this spray 15 days later. 4. Use Pan Peach Spray 15 to 20 days later against scab and brown rot. Borers may infest trunks at or beneath the soil surface. Examine for injury in June and September. Dig borers out with knife and wire. Use Para-Scalecide around trunks of older trees about Oct. 1st. as directed on package.

PEARS. *Pruning.* Prune pears as directed for apples except that more secondary branches are left to use for others in case of fire blight, the worst enemy. If blight occurs, with leaves turning black, cut off all blighted parts, and burn, disinfecting tools after each cut.

Spraying. If leaf-spot diseases occur to defoliate use Pan Apple Spray. Lime-Sulphur is also used as a winter spray against scale on the bark.

CHERRIES. *Pruning.* On planting, prune to 3 to 5 of best placed buds or branches around trunk but don't cut back tips of branches. Otherwise leave alone except for interfering branches until bearing. Then interior shaded branches may be removed to admit air and sunlight.

Spraying. 1. Use Pan Peach Spray when bud scales separate and show green. Add a teaspoonful of Black-Leaf 40 per gallon for sweet cherries. 2. Use Pan Peach Spray as husks split from the young fruit. 3. Use same spray 10 days later. 4. In years when leaf-spot is bad, use Lime-Sulphur after harvesting.

PLUMS. Prune as for young apples. Spray for brown rot as for peaches. If leaf-blight or black-spot diseases should attack leaves, use the Cherry spray schedule. Aphids are controlled by using Black-Leaf 40. For plum curculio, crescent-like markings in the fruit use Pan Peach Spray right after flower petals fall and again 10 days later.

BERRIES. *Blackberries and Dewberries* should be pruned. Pinch off tips when about 3 feet tall or long to develop low branches. After fruiting, cut out old stems as they are through bearing and will die anyway. Pull up between-row suckers to prevent spreading out of control. If underside of leaves develop a bright orange rust, pull up plants and burn them. Burn any canes infested with borers. Spray with Black-Leaf 40 for leaf miners in summer and with Bordeaux Mixture in winter as rust preventive.

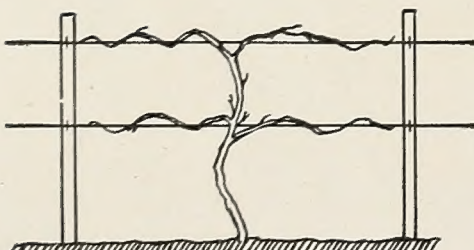
Raspberries are pruned as for Blackberries. In early spring remove dead and weak canes and shorten long new canes, leaving 3 to 5 strong canes per plant to fruit each year. Main diseases, as with Blackberries, are yellows, anthracnose, orange-rust and cane-blight. Remove and burn diseased plants, as also for cane and root borers. Spray as above.

GRAPES. (Vine and bunch type.) *Pruning.* Never in summer. Only prune while dormant preferably in December. Very long, overgrown canes are usually sterile so cut them off at their bases. Reduce length and number of normal shoots, thickness of a pencil, which will bear the next summer. Start training after second year, selecting 2, 4 or 6 canes from main stem in pairs to train horizontally, as in picture below, each cane restricted to bear 6 to 10 buds according to its strength. Each bud should average 2 grape clusters.

Spraying. Black-rot is the worst disease and spraying for that usually controls most other diseases and insects. Plow under rotted fruit in early spring. Spray 4 or 5 times with Bordeaux Mixture—first when new growth is starting, second when new growth is about 10 inches long, third after blossoms drop, fourth 10 days later, and fifth 15 days later. Second and third sprayings should have added a heaping tablespoonful of Arsenate of Lead to each gallon of spray to control flea beetle, rose chafer, berry moth and root worm.

SEE HASTINGS' GENERAL SPRING CATALOG FOR COMPLETE LISTING OF ALL SPRAY MATERIALS, ETC.

OR WRITE FOR PRICES



Pattern for Grape Pruning (all kinds)



Remove old fruiting canes after berries are picked

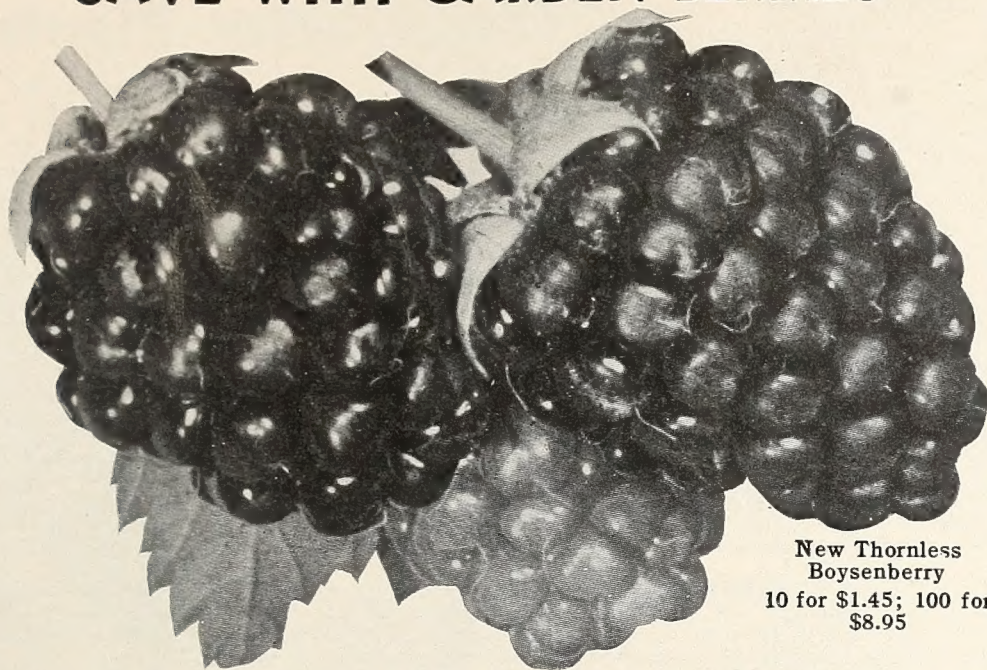


Remove dead and weak canes in spring



Cut limbs close

SAVE WITH GARDEN BERRIES



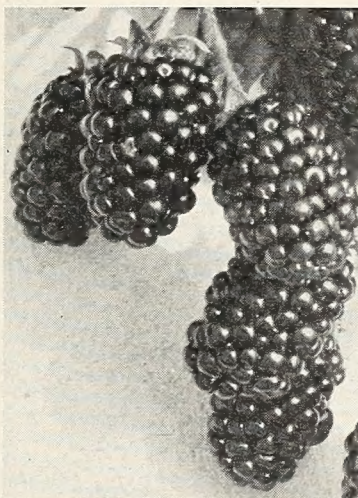
New Thornless
Boysenberry
10 for \$1.45; 100 for
\$8.95

B5. NEW THORNLESS BOYSENBERRY

A new glorified Youngberry of tremendous size and delicious flavor. Truly a most prolific and high-quality berry for home garden, local market, and shipping. Makes delicious jellies and jams and well adapted for wine-making. Delivered—10 for \$1.45; 25 for \$2.75; 100 for \$8.95.

B7. NEW THORNLESS YOUNGBERRY

This delicious, quick and heavy bearing, vigorous-growing discovery with berries that are even larger than the Loganberry, is purple-black in color and flavored somewhat like a Raspberry. Four years' comparative tests at Georgia Experiment Station show the Youngberry to be the earliest and heaviest bearing berry of this class. It is disease-resistant. Plant at least 4 by 8 ft. apart, or in a single row along a fence for home use. Give clean cultivation. Makes delicious fresh berries, jellies, jams, etc. Delivered—10 plants, \$1.50; 25 plants, \$3.00; 100 plants, \$9.95.



New Youngberry
10 for \$1.50

CHOICE RASPBERRIES

CULTURE. Plant in rows 5 to 6 ft. apart and 3 ft. apart in the row. Give them rich soil, fertilize well and cultivate thoroughly throughout the growing season. Fruit is borne on preceding year's new growth so all old canes should be removed after fruiting. Varieties below are best for the upper South.

B10. Sodus Purple

Said to be the heaviest yielding Raspberry and highly recommended to southern Raspberry growers. Fine, large purple berries to tempt the most fastidious. Delivered—10 plants, \$1.45; 25 plants, \$2.75; 100 plants, \$8.95.

B11. Logan Blackcap

Disease-resistant new blackcap Raspberry ripening early in the South to give abundant yields wherever Raspberries can be grown. Large, glossy black. Holds well in dry weather. Delivered—10 plants, \$1.00; 25 plants, \$2.25; 100 plants, \$6.95.

B12. St. Regis Red

Sometimes called Everbearing. It produces a good crop in spring and often a second crop in fall. Bright crimson, large, pulpy fruit with pronounced Raspberry flavor. It is a prolific, satisfactory grower. Delivered—10 plants, \$1.45; 25 plants, \$2.75; 100 plants, \$8.95.

B13. Van Fleet—Southern Red

The Raspberry for farther South. It is considered by far the best red for the South. Strong, vigorous, and a prolific bearer of delicious, subacid, medium fruits. Especially fine for the home-garden. Delivered—5 plants, \$1.00; 10 plants, \$1.50; 25 plants, \$3.45; 100 plants, \$11.95.

B14. Newburgh, New Red

Better than Latham, which it is fast displacing

A New York introduction very resistant to mosaic. Fruit unusually large, bright red and firm, of highest quality. Plants are unusually productive and growers of this new variety are well pleased with it besides its disease resistance. Delivered—10 plants, \$1.45; 25 plants, \$2.75; 100 plants, \$8.95.

FINE SOUTHERN BLACKBERRIES

CULTURE is alike for Dewberries. Plant in 6-ft. rows, plants 3 ft. apart in the row. Cultivate often while making growth and after harvesting cut to the ground all old canes that have borne their fruit. Pinch out the tips of new canes to branch.

B21. Early Harvest

Fine variety for home use and also for market. It ripens at least 2 weeks ahead of other Blackberries and at the same time makes large and excellent quality berries. Delivered—10 plants, \$1.25; 25 plants, \$2.45; 100 plants, \$7.95.

B23. New Alfred—Coreless

Mammoth new Blackberry particularly suited for the home-garden for eating fresh as well as for canning. Also a good commercial sort, displacing Eldorado and other older varieties. Delivered—10 plants, \$1.00; 25 plants, \$2.25; 100 plants, \$6.95.

DIXIE DEWBERRIES

B31. Lucretia

Best of all Dewberries. Unusually large berries of finest flavor. Plants are very prolific and strong growers. The soft and very sweet berries are produced early. Valuable for home and local market. Delivered—10 plants, \$1.00; 25 plants, \$2.25; 100 plants, \$6.95.

Cash in on Berries

Grow fresh berries for local markets and roadside stands. Commercial and community canning, home-made jellies, jams and preserves are most popular. Wineries are calling for all the berries and grapes we can grow. Ask for our special quotation on quantity lots of plants.

Strawberries offered on page 4

The Southern Garden Book

By Louise and Donald Hastings

A complete book of Southern gardening recommended by National Council of State Garden Clubs. Excellent chapters on fruit growing. Can save its cost every season. \$4.95. Postpaid.



Logan Blackcap Raspberries. 10 for \$1.00



Juicy Southern Strawberries are best from your own Garden

HASTINGS' "Golden Root" Strawberry Plants

New Heavy-Bearing Winners for
Southern Gardens and Old
Dependable Favorites

Blakemore. (Perfect.) Extra early; Missionary-Premier cross, replacing Premier with earlier, bright red berries of better color and size. Very firm; excellent canner; the early variety for home-gardens and high market prices.

SOUTHLAND. (Perfect.) U. S. Dept. Agriculture variety, particularly recommended for the South. Extremely early and dependable fruiting, giving highest quality, large, firm berries over a long bearing season. Best for the home-garden.

Fairfax. (Perfect.) Another introduction by U. S. D. A., superb companion to Dorsett which ripens slightly later. Uniformly large, bright deep red, very firm delicious berries borne abundantly over a long season. Grand for home-gardens and market.

GEM EVERBEARING. (Perfect.) The famous new everbearer, only one making plants freely. The large, smooth, pointed, dark red, very firm berry has excellent quality and sweet tart flavor. Prefers clay or heavy sandy loam, using hill system with runners nipped off for heaviest bearing. Main crops in spring and fall.

Klondyke. (Perfect.) An older variety heavily planted in the South. Early bearing on vigorous, upright growth, Klondyke is a real money-maker, either in small or large plantings. Handsome, large, firm berries.

Missionary. (Perfect.) Superb for light soils and growing in the lower South. The great leader in Florida for early, profitable crops. Berries well colored, large, and very firm for marketing.

1948-1949 SOUTHERN STRAWBERRY \$3.45 GARDEN ASSORTMENT \$5.95

150 vigorous plants (25 each of all 6 varieties described, enough for a small family), delivered to you for **\$3.45**
300 vigorous plants (50 each of all 6 varieties described, enough for an average family), delivered to you for **\$5.95**

GARDEN CULTURE: Use sandy loam soil, or as near as possible. Broadcast rotted manure over land, plowing thoroughly in soil. Lay off rows 2 to 2½ feet apart, mixing in bonemeal before setting plants. Space plants 12 inches apart in row, cutting away excess root-length and using care to set with crown barely above soil-level. Firm well and water. Keep cleanly cultivated at all times. Side applications of commercial fertilizer high in potash desirable, early spring before growth starts.

Keep berries cleanly picked upon ripening. Plant November to April in the South. Use 10,500 plants per acre for field culture; double that number for garden culture.

Strawberry Plant Prices Delivered to you

	100	500	1000	5000
Southland	\$2 25	\$7 65	\$12 95	\$49 50
Fairfax	2 25	7 65	12 95	49 50
Klondyke	2 25	7 65	12 95	49 50
Gem Everbearing	3 45	13 45	21 45	87 50
Missionary	2 25	7 65	12 95	49 50
Blakemore	2 25	7 65	12 95	49 50

Orders cannot be accepted for less than 100 plants of a variety. Shipments will be made from October 6 to April 15

Now is the Time to Invest in Pecans for Future Profits

CULTURE. Plant carefully; wet roots thoroughly as soon as received and plant quickly, not allowing roots to become exposed. Set trees 40 to 60 feet apart each way, depending on soil-fertility, with fruit trees between. Cultivate and fertilize for rapid growth the first few years. It will pay handsomely in high-quality nuts when bearing begins. Success and Moore are self-pollenizing. Schley and Stuart often need cross-pollenizing, so plant Moore or Success among them for pollenization.

SPECIAL 1948-1949 COLLECTION OFFER ONE 2-FT. TREE EACH, ALL FOUR VARIETIES, DELIVERED (\$7.56 VALUE) FOR **\$6.45**

N6. Stuart. Nuts very large, 1¾ to 2 in. long, oblong; brownish shell, marked darker, medium thin and good cracking quality. Kernel is full, plump, bright in color. Best and hardiest variety to cold. Livewell Coated Trees.

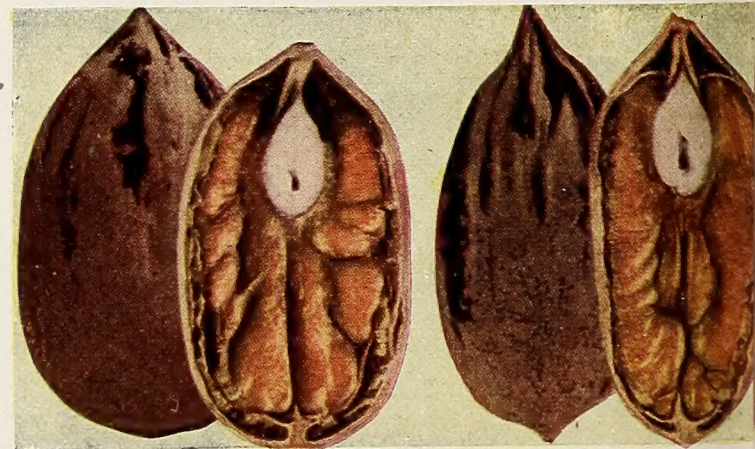
N8. Schley. Nuts medium large, 1½ to 1⅞ in., oblong, somewhat flattened, and light reddish brown. Thin shell, separating easily from the kernel, which is full, plump, bright, nutty and rich in flavor with the best quality. Most widely planted Pecan grown. Plant a plenty. Livewell Coated Trees.

N10. Success. Well named. Large, oblong nuts, tapering to the apex; reddish brown with purplish markings. Shell is thin, partitions thin, and cracking quality good. Kernel is large, full, plump, yellow; flavor sweet and quality very good. Tree is a strong grower, regular and heavy bearer. Livewell Trees.

N12. Moore. Nuts small to medium, oblong, thin-shelled and crack easily. Kernel is plump, quality and flavor good. Bears heavily at early age and earliest maturity nuts. Resistant to insects and disease. Livewell Coated.

N14. MAHAN GIANT—WORLD'S LARGEST

Tremendous giant MAHAN V-Giant has an excellent flavor for its huge size (2¼-3 in. long). To produce good crops of well-filled nuts it is necessary to plant in rich soil and to keep well-fertilized. Should be included in every Pecan orchard for its remarkable size—far greater than any other. Strong trees only. \$2.95 each; 3 for \$6.95. Delivered.



Pecan Prices—Livewell Coated Trees

Your Choice of Varieties—Separate or Assorted

DELIVERED—2-ft. budded trees, \$1.89; any 3 for \$4.89; 6 for \$8.89; 12 for \$15.89; 25 for \$29.89; 100 for \$115.89.

F. O. B. ATLANTA—Largest size to transplant safely. 4 to 6 ft., \$3.25 each; 12 for \$32.50; 25 for \$62.50.

WALNUTS

N16. Black. Favorite to grow anywhere! Prolific. Strong trees, rapid-growing. Delivered—60c each; 3 for \$1.50.

N18. Japanese. Sweet-meated, fairly thick-shelled nuts borne even when trees are young. Beautiful shade tree suited to Southern climate. Delivered—\$1.50 each; 3 for \$3.95.



N34. Elberta Peach—Standard Everywhere. 65c each; 3 for \$1.75.

GEORGIA'S WORLD-FAMOUS PEACHES

Our scions for budding are taken from bearing trees of record. You can depend on them.

N31. Belle of Georgia. Midseason. Freestone. Large, beautiful fruit with deep crimson cheek. White firm flesh is delicately marbled, tinted red at pit and of excellent flavor. Large, open-headed, fast growing, hardy tree and prolific bearer. Excellent shipper and popular beauty.

N32. Dixigem. Early. Freestone. Origination by the U. S. Experiment Station, Fort Valley, Georgia the center of all Southern peach growing. Rich yellow flesh and just about earliest of yellow freestone varieties. Medium size; bright red blush on yellow skin. Fine texture. Excellent flavor. Vigorous and prolific. Superb for home use or shipping.

N33. Early Elberta. Medium early. Freestone. Large fruit with yellow flesh, firm and juicy. Fine quality, same color and keeps longer than Elberta. For home and profit.

N34. Elberta. Late. Freestone. The standard everywhere. Very large, orange-yellow, overspread with red. Flesh is red at pit; juicy, firm but tender, sweet, excellent quality and fine shipper. Tree is large, vigorous, hardy, very productive and starts bearing young. Most popular of all.

N36. Hale Haven. Midseason. Freestone. This marvelous new Peach represents a cross of J. H. Hale and South Haven and has been found very hardy to cold and adverse conditions. Its golden yellow flesh is quite firm and its superb coloring before ripening commends it as a market variety of first degree. Two weeks earlier than Elberta.

N37. Hiley. Early Belle; Hiley Belle. Early. Freestone. Large; white skin with bright red cheek; flesh white, extra quality. Tree is a heavy bearer. Early shipping variety and one of the most profitable. Ripens early.

N38. Indian Cling. Blood Cling. Late. Clingstone. Medium-large fruits of dark red, mottled blood-purple; flesh streaked dark red, firm, juicy and fine. Reliable, extra flavored, old-time favorite. Ripens about August 1. Fine for home orchards but too juicy and fine to stand packing and shipping.

N39. J. H. Hale. Hale. Late. "Million Dollar Peach." Freestone. Largest of all. Better flavor than Elberta and ripens several days later. Creamy yellow, overspread rich red; flesh yellow, red pit, juicy, fine-grained, sweet and of excellent flavor. Tree vigorous and productive. Fine for all uses; its size and beauty selling it on sight and one to be proud of at home.

APRICOT

The delicious Apricot blooms early and needs protection from late frosts. Planted on hillsides with northern exposure will tend to keep trees dormant until greatest frost danger is past. Protection from frost and proper spraying will insure fine crops of this delightful fruit. Set trees 15 to 20 feet apart. Hardy as and ripens just before peaches.

N50. Early Golden. Of medium size and most satisfactory for home and commercial orchards. Round with smooth skin, fine flavor, juicy and sweet. Fruit is pale orange, tinged red. Ripe in June.

Delivered—2 to 3 ft., \$1.00 each; 3 for \$2.50

NECTARINE

Really a smooth-fruited peach, slightly smaller in size and of richer quality. There are no essential differences. Trees, requirements and propagation are the same. Plant a few along with your peaches for a delightful flavor. They do not take up much room and provide a quantity of fine fruit.

N51. Hunter. Light greenish yellow, smooth skin, with dark red cheek. Flesh is firm, juicy and delicious. Bears from late July to early August. Clingstone. An excellent home orchard or garden fruit.

Delivered—2 to 3 ft., \$1.00 each; 3 for \$2.50

HASTINGS' BARGAIN HOME ORCHARD

12 STRONG TREES FOR \$7.65, POSTPAID INCLUDING NEW CHINESE CHESTNUT

Hastings makes this special home orchard offer at this low price to bring back to Southern Homes the bounteous fruit and nut harvest for health to all the family, and delicious fruits to be canned for winter use, saving in your family budget.

Finest flavors and juiciest specimens are tree-ripened in your own yard and picked with your own hands. Complete assortment for the average family. (No changes allowed, please.)

N36. PEACH, HALE HAVEN. Midseason.

N32. PEACH, DIXIGEM. Early.

N34. PEACH, ELBERTA. Late.

N42. PEACH, WHITE ENGLISH. Very late.

N81. PLUM, BURBANK. Midseason.

N71. CHERRY, EARLY RICHMOND. Early.

N90. APPLE, ALL-RED DELICIOUS. Fall.

N93. APPLE, STAYMAN WINESAP. Winter.

N91. APPLE, YELLOW DELICIOUS. Winter.

N61. PEAR, KIEFFER. Late.

N62. PEAR, PINEAPPLE. Late.

CHESTNUT, NEW CHINESE. (Blight Resistant.)

One strong tree from our regular stock of each for \$7.65, ppd.
3 trees of each variety (36 in all) for \$19.95, delivered

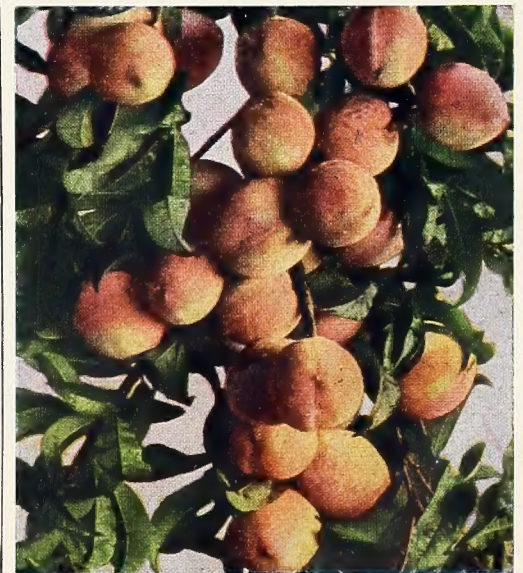
N40. Mayflower. Earliest of all. Freestone. Medium size; entirely red. The best early, ripening here by late May. Fair quality and a good shipper. Tree is vigorous and blooms late, so seldom gets frost to cause crop failure.

N42. White English. Very late. Clingstone. For Peach pickles and preserving. Tender, melting, juicy, most luscious white flesh and yet quite firm and doesn't bruise easily. Good size fruit with small pit. This is the best kind to use for brandied Peaches for which it is famous.

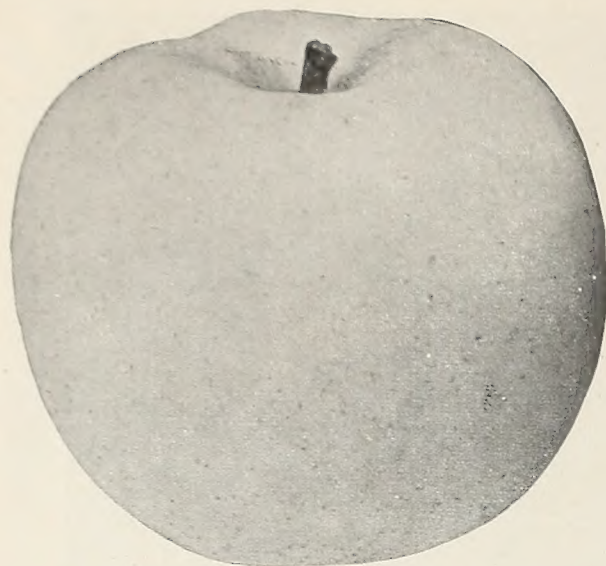
Double Flowering Peaches. See page 24.

Order Peaches Now For Early Planting

Take your choice of one or more varieties
Delivered—2 to 3 ft. trees, 65c each;
any 3 for \$1.75; any 12 for \$5.85;
any 25 for \$10.85; 100 for \$30.00
F. O. B.—Heavy specimen trees, \$1.00
each; any 3 for \$2.75; any 6 for \$4.95;
any 12 for \$8.95
Write for quantity prices



N33. Early Elberta—Big, Safe, Early Peach.



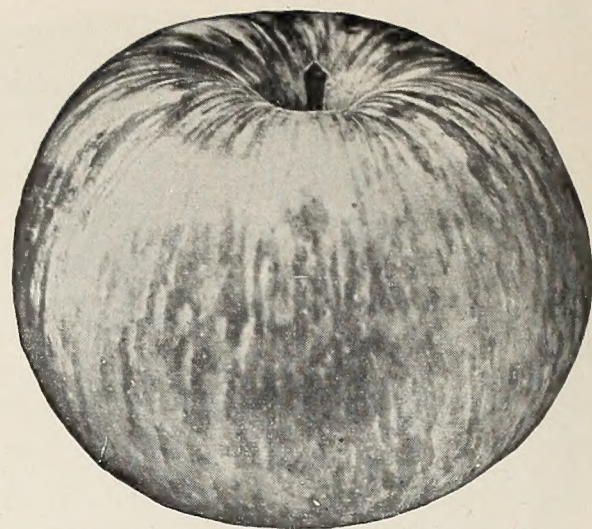
N91. Yellow Delicious—Finest Yellow. 70c

Grow Your Own Fruits

The main fruit of every orchard, except in the lower South, should be Apples. They are the most valuable and dependable fruit. Over half the Apples should be in late varieties for winter use. Plant in well-drained soils, prune systematically; cultivate and spray systematically. Plant trees 25 to 40 feet apart, depending on richness of soil.

Peaches, Plums or small fruits may be planted between trees and cut in about 12 years.

Write for our best prices on commercial orchard quantities.



N94. Yates—Crisp, Juicy Winter Apple. 70c

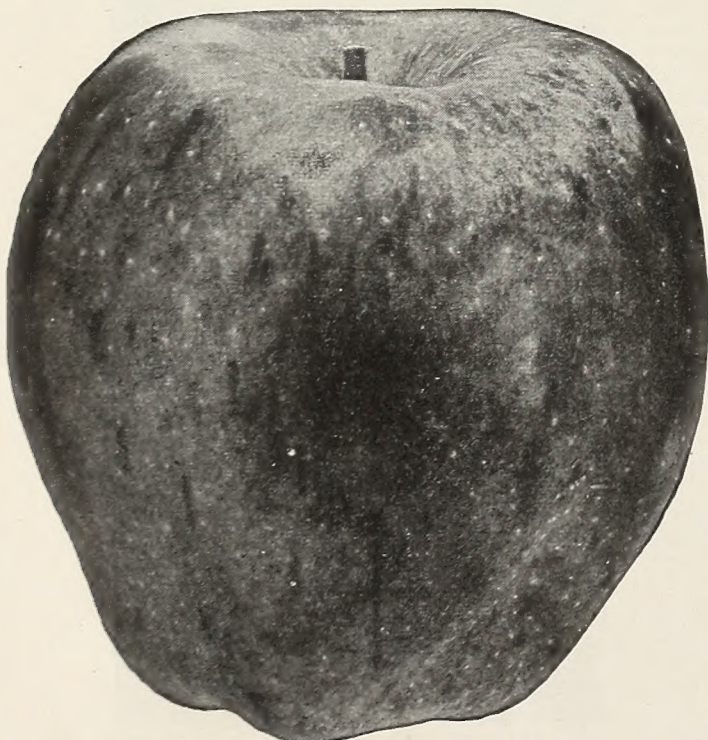
A WORD...

About Fruit Trees

We, fortunately, have a good supply of fruit and nut trees available this season and we are reducing prices by absorbing the increases in costs of production. We hope the price line can be held next year as well, but our advice is to take advantage of these offerings NOW to be sure.

Nothing is so good as fresh fruit tree ripened, gathered from your own trees and served quickly on your table.

N90. All-Red Delicious. Late fall. Large, uniform, round, long, tapering with ribbed nose. Turns solid red without stripes while still hard. Flesh fine-grained, tender, firm; highly flavored juice, mild but not sweet, fragrant aroma. Wonderful flavor and appearance, stands shipment and storage. Tree hardy, vigorous, productive and widely adapted. Prices above.



N90. All-Red Delicious—Beautiful. 70c

PLANT YOUR DIXIE FRUIT GARDEN WITH SOME APPLE TREES

F. O. B.—Large trees: \$1.10 each; any 3 for \$2.95; any 12 for \$9.95. Delivered—2 to 3-ft. trees: 70c each; any 3 for \$1.85; any 12 for \$5.95; 25 for \$10.95; 100 for \$36.00. All Apple varieties listed on this page included (except Crabapple and Everbearing).

N91. Yellow Delicious. Early winter. Finest yellow Apple, with the wonderful flavor of Delicious. Best for home and most profitable for market. Medium size, round, highly flavored. Skin is clear golden yellow with few russet dots when ripe. Flesh is yellowish white, crisp and moderately juicy with a mild subacid flavor. Regular, dependable bearer. Hardy, vigorous and productive. Prices above.

N93. Red Stayman Winesap. Winter. Strictly high-quality Apple for the South and perhaps the most extensively grown. The heaviest bearer and with more good qualities than any other variety. Good-sized, roundish fruits with thick, tough skin of yellowish green changing to a lively deep red, splashed dark crimson. Flesh yellowish white, firm, crisp, juicy with rich, pleasing subacid flavor. Good, long keeper that always tastes good. Excellent. Prices above.

N94. Yates. Winter. Small yellow fruit, dark red stripes, turns almost crimson. Not strictly commercial but has proved one of the best. Excellent home orchard variety and one of the best eating Apples. Firm, crisp, juicy and highly flavored; popular. Prices above.

N95. YELLOW HORSE APPLE

Late summer. Large, greenish yellow, firm, hard, crisp variety with acid flavor. Popular everywhere for cooking, drying, eating, for apple-sauce, baking, fried Apples. Prices above.

THE SOUTHERN GARDEN BOOK

By Louise and Donald Hastings

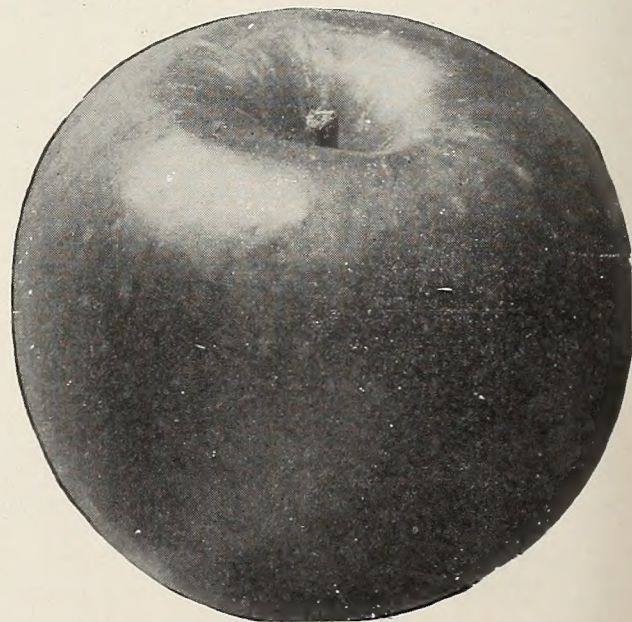
A complete book of Southern gardening recommended by National Council of State Garden Clubs. Excellent chapters on fruit growing. Can save its cost every season. \$4.95. Postpaid.

CRABAPPLE

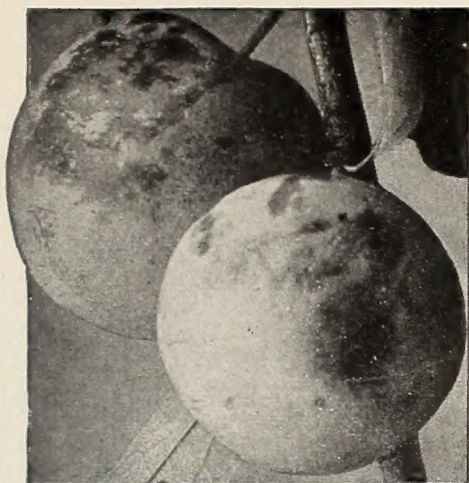
N96. HYSLOP. September to October. The best Crabapple and a splendid money-maker because the annual crop is so heavy. Solid red fruit of large size. Fine for all purposes—jelly, cider and preserving. Delivered—2 to 3 ft., \$1.00 each; 3 for \$2.50.

Outstanding Introduction! N97. REAL EVERBEARING APPLE.

Early, medium and late fruit of same variety on same tree. Begins to ripen in early summer and continues through the summer. Medium size, yellow skin overlaid with blush or stripes sometimes almost solid red. Superb for eating and makes finest of apple pies, sauces, etc. Have an entire apple orchard with just one tree! Ideal for limited spaces. **Introductory Offer.** Strong heavily rooted trees, postpaid. \$2.50 each; 3 for \$6.00; 12 for \$18.00.



N93. Stayman Winesap—Southern Standard. 70c



N81. Burbank Plums. 80c

FINEST PEARS

Bear in 3 to 5 years from planting but prune back heavily the first few years to keep in reach for sprayer and fruit.

N64. Baldwin. Blight Resistant. A new, very superior blight-resistant Pear of good size and excellent flavor for eating fresh or for cooking. Originated in Baldwin County, Alabama, and thoroughly adapted to our Southern climate. If you want a really better blight-resistant Pear, we certainly recommend this new Baldwin Pear to you. Matures in August. F. O. B. Large trees only. \$1.95 each; 3 for \$5.25; 12 for \$18.00.

N65 NEW ORIENT TABLE PEAR

(Blight-Resistant)

Finest new table pear that is very resistant to blight. Introduced by Tenn. Exp. Station this new pear gives the South a new hope and opportunity in pear growing for home and market.

Large fruit ripening about mid-August. Skin thick, flesh creamy white of good texture and delicious, mild flavor. Outside greenish at maturity, ageing mellow yellow. Foliage dark green rarely showing leaf spot. Tree grows large and spreading, requires little pruning. Extra strong trees, \$3.00 each; 3 for \$7.50; 12 for \$24.00. Delivered.

N60. Bartlett. Large; pyramidal shape; clear yellow with blush on exposed cheek, dotted russet; flesh fine-grained, slightly granular at center, buttery and rich, very juicy, excellent flavor, good quality. Widely adapted, prolific favorite. Prices below.

N61. Kieffer. Large to very large, roundish oval; rich golden yellow, red blush on sunny side; flesh whitish, juicy, firm and remarkable keeper; improves on ripening indoors. Refreshing wine flavor. Prices below.

N62. Pineapple. Practically blight-proof; most valuable for lower South. Strong, vigorous and productive. Large, handsome; pineapple odor. Flesh coarse, crisp, juicy; fine for cooking or canning. Prices below.

Pear Prices Except Baldwin and Orient

F. O. B.—Large trees \$1.45 each; any 3 for \$3.95; any 12 for \$13.95. Delivered—2 to 3 ft., 90c each; any 3 for \$2.45; any 12 for \$8.45.

REAL SUGAR FIGS

A Fig orchard or tree requires very little care. Figs bear from June to November in the lower South and usually two crops a season in the upper South. Productive.

N110. Brown Turkey. Medium to large, broadly pear-shaped; short and thick stem; few ribs; coppery brown color; flesh white to slightly amber, shading pink about the seeds, solid and excellent quality.

Delivered—strong plants, 75c each; 3 for \$1.95; 12 for \$6.95.

N111. Celeste. Small to medium, pear-shaped, ribbed; purplish violet-brown with bloom toward neck; flesh whitish, shading rose at center, firm, juicy, sweet and excellent quality; short, stout stem. Hardest variety; prolific, vigorous. Delivered—strong plants, 75c each; 3 for \$1.95; 12 for \$6.95.

DELICIOUS PLUMS

Always popular, quick to grow and bear abundantly in middle and upper South.

N81. Burbank. Japanese. Dark red on yellow ground, mottled, thick bloom; flesh deep yellow, juicy, tender, firm, sweet, and of best quality. Handsomely colored, keeps and ships well. Ripens week after Abundance. Thin fruit for perfection. Tree large, vigorous, very productive. Prices below.

N82. Japanese Gold. Japanese. Fruit large, clear golden yellow. Healthy, hardy tree bearing extra-heavy crops practically every season. Midseason maturity and one of the very best Plums for average Southern home orchard. Prices below.

N83. Red June. Earliest Japanese. Garnet-red, mottled, thin bloom on fruit; flesh light yellow, rather meaty, sweet. Ripens week earlier than Abundance. Large, roundish ovate, good shipper. Tree large, hardy, vigorous, spreading, productive, healthy. Prices below.

N84. Shropshire Damson. Small, roundish, purplish black, thick bloom dots numerous; flesh golden yellow, juicy, firm but tender. Well-known English Plum, vigorous, prolific. Should be in all home orchards. Late variety.

Plum Prices F. O. B.—Large trees \$1.25 each; any 3 for \$3.25; any 12 for \$11.95. Delivered—2 to 3 ft. 80c each; any 3 for \$2.25; any 12 for \$7.95.

GIANT PERSIMMONS

Crop very short. Order early please.

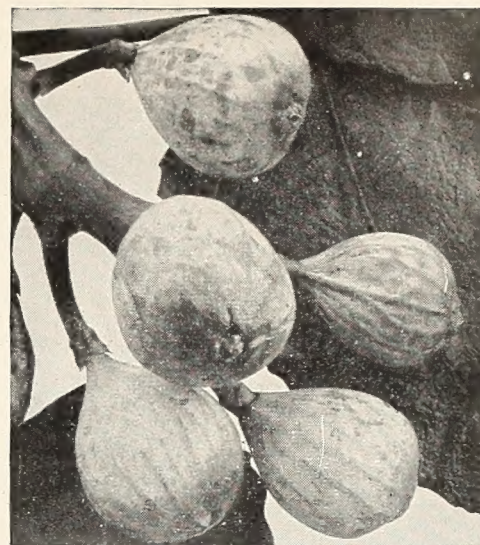
The Japanese Persimmon is one of our finest fruits, coming into strong market demand and it is luscious to eat and use in frozen desserts. Hardy in the lower and middle South.

N103. Tane-Nashi. Japanese. Large to extra large, 3¼ x 3¾ in., beautiful, conical and smooth; light yellow changing bright red; flesh yellow and seedless, quality supreme. Most desirable market variety, uniform size, quality and shape. Vigorous and productive; best light-fleshed variety. Ornamental tree or shrub as well as useful.

Delivered—2 to 3 ft., \$1.98 each; 3 for \$5.48; 12 for \$18.98.

MULBERRY

N102. Hick's Everbearing. Vigorous-growing tree thriving in the Southern States where it is so well adapted. Good Mulberries are so easily grown that it is a shame not to include them in our plantings. Rich sweet fruits all summer. Delivered—\$1.00 each; 3 for \$2.50.



N111. Celeste Figs. 75c

SUPERB CHERRIES

Satisfactory in the upper South. Sweet Cherries do best on high land; ideal for back yards. Sour Cherries are easy to grow and heavy bearers for home or market.

N70. Black Tartarian. Sweet. Early. Delicious to eat and can. Fruit almost black, large, heartshaped, with small pit; purplish red flesh, meaty, juicy and rich. Tree a regular bearer, extra large and long lived. Ripens in May and June.

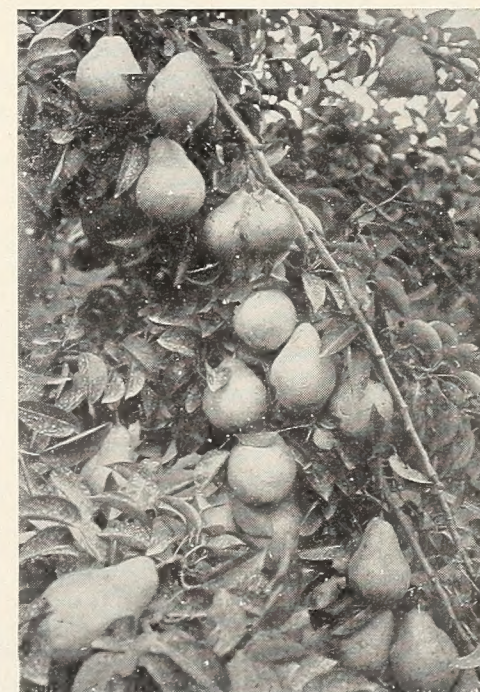
N71. Early Richmond. Sour. Earliest. Profitable; delicious; cherry-red, thin skin, easily separated from pulp; flesh pale yellow, pinkish juice, tender and melting, small free stone. Heavy bearer in May-June.

F. O. B.—Large trees, \$1.50 each; 3 for \$3.95; 12 for \$13.95. Delivered—2 to 3 ft., 95c each; 3 for \$2.65; 12 for \$8.95.

CHINESE CHESTNUT

(Blight-Resistant)

N101S. Bearing in 3 to 4 years under good conditions, these remarkable trees again give us large, sweet nuts to delight us every fall. The trees are large, spreading and are very beautiful. Plant two or more for best crops. \$1.00 each; 3 for \$2.50; 12 for \$8.75; 25 for \$15.75; 100 for \$60.00. Postpaid.



N61. Kieffer Pears. 90c

CASH IN ON GRAPES

For Profit

GRAPE CULTURE. Set bunch-type Grapes 6 to 8 feet apart each way, leaving 3 buds, spreading and covering roots carefully. Set Muscadines and Scuppernongs 12 to 15 feet apart, placing males nearby bearing vines. Rotted manure is excellent fertilizer; broadcast around the vines. Keep cleanly cultivated.

Prune in winter according to system used in training the vines. Usually, nearly three-fourths of the vine is cut away each year. Fruit is produced on new shoots, from buds on the previous season's growth. Retain medium-sized canes, removing weak and old canes. Bunch Grapes require spraying with Bordeaux-lead arsenate mixture twice or more annually.

OWENS
NEVERMISS
SCUPPERNONG

Plant Patent 692

Truly the greatest development in Scuppernong-Muscadine history since the original Scuppernong was discovered many years ago.

Actually, Owen's Nevermiss Scuppernong is the first real Scuppernong improvement ever offered for home or commercial use.

Remarkable in its strong, vigorous growth and regular year to year bearing habits of larger, sweeter and finer fruit in larger clusters, Owen's Nevermiss promises to make the South an even greater producer of this delicious fruit than ever before. It is ideal for fresh use, or for making sweet juice or for fermentation and on a commercial basis has produced over two tons per acre.

Hastings' is the exclusive distributor of this new development. It cannot be purchased anywhere else.

G692 Genuine Owen's Nevermiss Scuppernongs. Postpaid, 1 vine \$1.00; 3 for \$2.75; 6 for \$5.25; 12 for \$9.65; 25 for \$18.75; 100 for \$70.00. (One male plant required for each 1 to 15 bearing vines—75c each EXTRA.)

BEST SOUTHERN MUSCADINES

G111. Creek. New extra fine reddish purple Muscadine borne in large clusters. Thin skin; medium size. Excellent wine variety. Ripens about October 1.

G112. Hunt. New favorite with vigorous vine and regular bearing habits. Fruit large, black, bunching well, excellent flavor. Ripens late August in mid-South.

G113. Dulcet. Delicious reddish purple Grapes, borne in clusters. Vine is strong, healthy and free from disease. It ripens just before Scuppernong and its delicious sweetness lingers with you. September 15.

G114. Thomas. The popular favorite for making wine. Medium-sized, juicy berries of darkest red in small clusters. Prolific, free from disease and famous for its Muscadine Punch. Mid-September.

G115. Yuga. Light bronze Grape of excellent quality. Large clusters to ripen in late September. Very sweet and holds on vine unusually well.

G120. MALE. Plant one male for up to 10 bearing plants; same male good for Scuppernongs or Muscadines planted within 50 or 75 feet.

Prices all varieties above (except Nevermiss), delivered postpaid, including male plants: 75c each; any 5 for \$2.75; any 10 for \$4.95; any 100 for \$40.00.

G118. Tar Heel. Male and female Muscadine! Pollen bearing female plant having huge crops of small, jet black, sweet and delicious fruits borne in large clusters AND supplying pollen for female or other bearing plants nearby. Will eventually displace male plants which bear no fruit. Special. \$1.00 each; 3 for \$2.75. Postpaid.



Genuine Nevermiss Scuppernong. (Plant Patent 692)

SOUTHERN HOME GRAPE COLLECTION—\$1.00

Nothing in this whole Catalog will give greater satisfaction than this splendid set of Hardy Grapes. Every home, if only on a city lot, can find space to plant them. One each of Concord, Caco, Niagara, and

Fredonia, strong, well-rooted. Best size, sure to do well. Delivered—Only \$1.00. Order for your friends, too—A real bargain in fine Grapes. (\$1.45 value.)

\$2.65 Special Grape Collection (\$3.60 value)

For our most exceptional Grape offer and the greatest bargain we shall include 2 plants each of Concord, Caco, Niagara, Fredonia, and also 2 of Moore's

Diamond, the great white Concord. 10 Grape-Vines, all strong new plants, for a real Home Grape Planting—Delivered for \$2.65. Order several!

GREAT FREDONIA GRAPE

G130. By far the finest of the new early Grapes, ripening well ahead of Concord and continuing to hang on the vine in perfect condition for many days until harvested.

Fredonia is a large blue-black Grape in heavy bunches, ripening very uniformly to make it just about perfect for home use or market. It is the superb TABLE GRAPE. And it makes excellent juice.

We are proud to offer this new Grape to you this season in our "Home Grape Collection" and separately as priced. Delivered—35c each; 5 for \$1.50; 10 for \$2.50.

Muscadine-Scuppernong Collection \$2.75

One strong vine each of HUNT, THOMAS, CREEK, OWEN'S NEVERMISS SCUPPERNONG—AND—one male vine to pollenate all of them. POSTPAID FOR \$2.75. (You save \$1.25.) This will give an extra long season of bearing from late August until early October and the finest varieties in the world! Order to plant early for best results.

G131. Concord—The Standard. Best-known Grape in existence. Large berry and bunch; blue-black thin skin; flesh sweet and tender and of good quality. Strong grower, prolific bearer and most popular variety for home or market. Delivered—30c each; 5 for \$1.25; 10 for \$2.25.

G132. Lutie, the Southern Grape. Recommended as the best and most satisfactory for the South. Medium-large berries; large bunches; dark red; very sweet and excellent quality. Ripens quite early and hangs on the vine until Concord is ripe. Valuable. Delivered—45c each; 5 for \$1.75; 10 for \$3.25.

G133. Moore's Diamond. Greenish white Concord seedling, without yellow spots as on many white Grapes. Berries large, sweet and fine quality. A hardy, profuse bearer, ripens early and one of the best on the list. Delivered—35c each; 5 for \$1.50; 10 for \$2.50.

G134. Caco, Fine Red Grape. Most delicious of the red Grapes. Early, sweet, and tender. Large, compact, rich wine-red fruit. Early bearing. Strong and vigorous. Excellent for home use. Delivered—45c each; 5 for \$1.75; 10 for \$3.25.

G135. Niagara. Best white Grape grown. Large berries and large bunches; greenish yellow skin; sweet, pulpy flesh. An all-round good Grape. Vigorous and satisfactory grower. Delivered—35c each; 5 for \$1.50; 10 for \$2.50.

HASTINGS' Hardy Perennial Plants

Our Low Postpaid Plant Prices

Plants priced at 45c each are any 3 for \$1.20; 12 for \$3.95. 50c plants are any 3 for \$1.25; 12 for \$4.45. 55c plants are any 3 for \$1.45; 12 for \$4.95. 60c plants are any 3 for \$1.50; 12 for \$5.45. 75c plants are any 3 for \$1.95. \$1.00 plants are any 3 for \$2.50.

Varieties starred (★) are low growing, suitable for rock- or wall-gardens

HARDY ASTERS

Michaelmas Daisies; Starworts. Showy late summer and fall. Give sunny exposure and they grow and bloom in almost any soil.

Red Rover. Flowers nearest pure red. Blooms 'til frost. 60c each.

Blue Plume. Rich blue flowers on good stems. 55c.

Climax. Showiest light lavender blue. 50c.

Hilda Ballard. Enormous flowers of lilac on strong dark stems. 50c.

Strawberries and Cream. Double cream and red bicolor sensation. 60c each.

Royal Pink. Completely smothered in bright pink flowers. 60c each.

COLLECTION:

All 6 Hardy Asters above, postpaid for \$2.95

Hastings' New Hardy Garden Chrysanthemums for the South

These are not the giant Japanese or football-type Mums

Wonderful bloomers for a great fall show of garden color. Keep all Chrysanthemums disbudded or pruned for finest late summer and fall flowers. Small to medium flowers.

Autumn Breath. Cinnamon-yellow bicolor. Clean. 65c.

Bronze Pyramid. Orange-bronze on good stems. 65c.

Calcite. Double chalk white. Pale yellow centers. 75c.

Candle Light. Free flowering double creamy white. 75c.

Charles Nye. Finest yellow pompon. 75c.

Dubonnet. Amaranth-pink on good stems. 65c.

Evening Sun. Carmelian-red shading orange, single. 65c.

Gale S. Wind blown peach-bronze. Early. 65c.

Goldilocks. Brilliant canary-yellow pompon. 65c.

Olive Longland. Salmon-orange and early. 65c.

White Cloud. Eggshell pink turning white. 75c.

Wm. Longland. Clear yellow suffused red. 65c.

The Discriminating Gardener Collection

One each of all twelve for \$6.95 Any six for \$3.75 Any three for \$1.95 POST-PAID



Hardy Aster, Red Rover

Exotic Spoon CHRYSANTHEMUMS

Hardy and thrifty. Delights with spoon-shaped flowers.

Jasper Spoon. Bronze-red over brilliant gold. 60c each.

Golden Spoon. Large, clear gold. 60c each.

Orchid Spoon. Clear orchid of good size. 60c each.

Yellow Spoon. Brightest yellow delight. 60c each.

Rose Spoon. Shining rose. Lovely. 60c each.

COLLECTION

One each all 5 Spoons in a gorgeous array of beautiful colors (\$3.00 value) sent postpaid for only \$2.45



Chrysanthemums, make colorful Southern Gardens

New Cushion CHRYSANTHEMUMS

COLLECTION: One each of six newest Cushion or Azalea-like Chrysanthemums below, sent postpaid for \$2.75.

Serene. Brand new pure white cushion. 60c each.

Peach. Lovely peach-pink flowers in glorious display. 60c each.

Deluxe Red. Real bright double red cushion. 60c each.

Early Joan Helen. Garnet, shading purple. 60c.

Flavita. A feature in clear apricot. 60c.

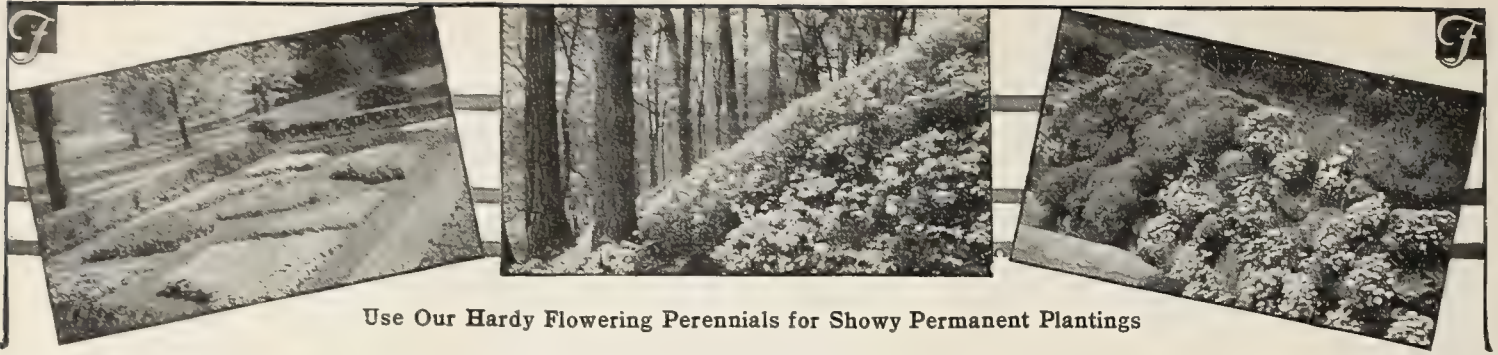
Major Cushion. Brightest salmon pink glory. 60c.

Chrysanthemum Maximum Shasta Daisy

King Edward VII. Finest new introduction in years. Gorgeous and immense single flowers coming very late. Special, 55c each; 3 for \$1.45.



Free-flowering Cushion Chrysanthemum



Use Our Hardy Flowering Perennials for Showy Permanent Plantings

Achillea

Milfoil; Yarrow. Delightful, easily grown, hardy plants for sunny places in good garden soil.

Boule de Neige. Ball of Snow. Largest, finest double white. 45c each.

★Ajuga

Reptans Blue. 3 in. Creeping ground-cover for shady places and rockeries. Bronze foliage. Soft blue flowers in early summer. 55c each.

Anchusa

Alkanet; Cape Forget-Me-Not. Of easy culture in any sunny and well-drained soil.

Italica, Feltham Pride. 3 to 4 ft. Bright blue flowers. Vigorous growth. 50c each.

★**Myosotidiflora.** 12 to 18 in. Compact forget-me-not flowers in April. Luxuriant large foliage all season and delightful true-blue flowers in panicles, for edging, low borders, around shrubbery and trees. 55c each.

Anthemis

Moonlight. Hardy Golden Marguerite. Finely cut, fern-like foliage with yellow daisy-like flowers from May to October. Valuable for cutting as well as in the border. 50c each.

Armeria

Cephalotes Rubra. Best Sea Pink or Thrift. Striking red flower heads on wiry stems. 55c each.

ARTEMISIA

Silver King. 30 in. Decorative plant in border or for bouquets, baskets, and other floral pieces. May be cut and dried for use all winter. Bright silvery stems and foliage. 50c each.

Boltonia

Snowbank. Pure white, daisy-like flowers on 4-ft. grand cutting stems. 50c each.

Campanula

Canterbury Bells; Bellflower. 2 to 3 ft. Very showy flowers in June for garden and cutting. The single bells are best.

Medium, Mixed Colors. Numerous branches crowded with large bells. Popular wherever grown. Biennial. 45c each.

Coreopsis

Double Sunburst. 2 to 2½ ft. tall. Golden yellow, double flowers of large size. 45c each.

Delphiniums

Fall and winter planting is best.

Belladonna. Sky-blue. 50c each.

New Hollyhock Hybrids. New giants surpassing even the best English strains. 60c each.

Dicentra · Bleeding-Heart

Bushy plants 1½ feet high with long racemes of graceful heart-shaped pink flowers in spring.

Spectabilis. True Bleeding-Heart. Extra-heavy clumps. \$1.00 each; 3 for \$2.50.

Digitalis · Foxglove

New Princess Pastels. Striking, tall, stately spikes with lovely bright colored bells in pastel shades. 50c each.

Eupatorium

Coelestinum. Hardy Ageratum. Laven-der-blue flowers on good stems. 55c each.

Funkia

Undulata variegata. Plantain Lily. Lilac flowers in spring, on attractive spikes above beautiful foliage plants. 50c each.

Gaillardia

Blanket Flower. Thrives even in poor, dry soils. Large, showy, golden yellow daisy-like flowers on long, wiry stems for cutting. Superb for borders, beds and cutting and perfectly hardy.

Superba. (Everblooming.) 24 in. Immense; rich golden yellow with red centers. 50c each.

Gerbera

Transvaal Daisy. Handsomest Daisy. Plant with crown above soil surface. Give drainage and considerable protection. These are adapted to outdoor, year-round culture only in the lower half of the South unless protected during the winter.

★**Jamesoni Hybrids, Mixed.** Beautiful single flowers in lovely colors. 60c each; 3 for \$1.50; 6 for \$2.75; 12 for \$5.45.

Gypsophila

Baby's Breath. Large, graceful, airy panicles of miniature, snow-like white flowers.

Bristol Fairy. Finest, largest, double white. 60c each.

Rosy Veil. Dwarf; lovely pink. 55c each.

Hedera · English Ivy

Gracilis. Very dwarf. For rockeries or for pots, indoor window-gardens. 40c each; 3 for \$1.05; 12 for \$3.75.

HELIANTHUS

Coronation. Large, perfect double flowers of richest yellow. 4 to 5 ft.; excellent for cutting. 60c each.

Loddon Gold. Enormous dahlia-like flowers, bright yellow and very showy. Cut and come again. 4 to 5 ft. tall. 60c each.

Hibiscus

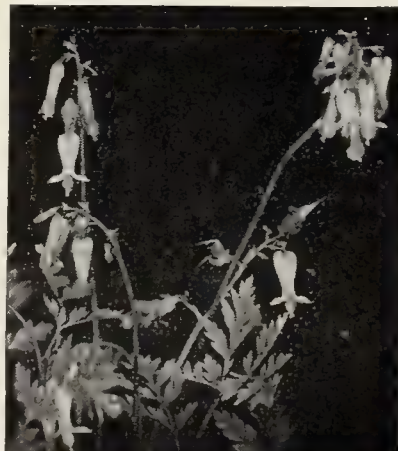
Mallow Marvels. Red. Rosemallow. Improved Giant-flowering. 40c each; 3 for \$1.05; 12 for \$3.75.



Day Lilies (Hemerocallis). Page 13



Campanula Medium



Dicentra—Bleeding-Heart



Physostegia. Page 11



Hastings' Siberian Iris—Fastest Growing

Iberis

Snowflake. True perennial Candytuft, so superb for beds and borders of Southern gardens. 55c; 12 for \$4.95.

* Liatris

Scariosa. New dwarf form with lovely rosy lavender flowers. 50c each.

Lobelia

Cardinalis. Many spikes of cardinal flowers on grand cutting stems. 55c each.

Lythrum

Bonny Pink. Bright rose-pink Loosestrife. Beautiful cut-flowers in midsummer. A grand novelty. 60c each.

MERTENSIA

Virginica. Virginia Bluebells. Plants with large, smooth leaves surmounted by large panicles of bell-shaped blue, changing to pink, flowers in spring. 50c each.

Monarda · Bee Balm

Cambridge Scarlet. Erect, showy perennial with lovely scarlet flower-heads in midsummer. 60c each.

Physostegia

Rosy Spire. False Dragonhead. Many long flower-spikes all summer. 50c each.

Summer Snow. Pure white novelty. 60c each.

Pyrethrum

New Hybrids. Painted Daisy. Exquisite daisy flowers in pastel colors. Fine for table arrangements. 50c each.

HARDY BEARDED IRIS

- P121. **Ambassadeur.** S. bronzy; F. maroon.
- P130. **Happy Days.** Superb giant yellow.
- P123. **Indian Chief.** Red-purple.
- P124. **Lent A. Williamson.** S. violet; F. pansy.
- P131. **War Eagle.** Finest red tone.
- P132. **Southland.** Lemon-chrome. Fall bloomer.
- P125. **Mother of Pearl.** Soft gray-white.
- P122. **Eleanor Roosevelt.** Fall bloomer.
- P126. **Pallida speciosa.** Deep blue.
- P127. **Princess Beatrice.** Pale lavender-blue.
- P128. **Susan Bliss.** Fine lilac-pink.
- P129. **Violacea grandiflora.** Vigorous; lavender.

PRICES—1 each of all 12 (unlabeled) for \$2.45. SEPARATE VARIETIES—3 for 95c; 6 for \$1.75; 12 for \$2.75, postpaid.

Hastings' Siberian Iris

Bloom profusely. Like moist places best.

COLLECTION: 1 each all 3 for \$1.15, postpaid.

Kingfisher Blue. 3 ft., bright blue. Very showy in garden and excellent for cutting.

Mrs. Rowe. 3 ft., silvery white. Easily grown, very prolific, striking white flowers.

Pseudacorus. 2 ft., rich yellow species.

PRICES—45c each; 3 for \$1.20; 12 for \$3.95.

Rudbeckia

Golden Glow. Golden yellow cut-flower favorite. 45c each.

Sedums

Kamschaticum variegatum. Golden yellow, variegated foliage. Orange flowers. 40c each.

***Spectabile, Brilliant.** 18 in. Large leaves. Red flowers in September. 40c each.

Stokesia

Blue Moon. Cornflower Aster. Perennial Cornflower with bright blue flowers. 55c each.

Teucrium Chamaedrys

Very rich glossy green dwarf border plant superbly suited for outlining beds, walks, etc. Plant 8 in. apart. 45c each.

Thermopsis

Caroliniana. Lupine-like plant with yellow pea-like blooms in May and June. About 2 ft. high. 50c each.

Tritoma

Hastings' Super Hardy. Red-Hot Poker. Exotic orange-scarlet shafts; grassy foliage. 55c each.

Veronica

Heavenly Blue. 18 in. Long bright blue spikes from glossy green foliage. 45c each.

Violet

Royal Robe. A wonderful huge Violet for cool nooks only. Will not stand too much heat. 60c.



Veronica. 45c



Tritoma, Hastings' Super Hardy. 55c each

PLANT PERENNIALS EARLY

and in fairly rich, loamy, well-drained beds for good results. Do not cover crowns of plants with soil.



Mertensia virginica (Bluebells). 50c

Exotic ORIENTAL IRIS

Order Now at These Low Prices
Shipment in November

POSTPAID PRICES

Your choice of any of these Orientals listed: 50c each; any 3 for \$1.25; any 6 for \$2.35; any 12 for \$4.45. Make your own selections of choicest colors.

Plant in rather rich, well-drained but moist soil with plenty of sun. They like lots of moisture and some acidity.

Astarte. Double dark violet. Prolific.

Blue Bird. Single dark violet. Superb.

Caroline G. Childs. Single white veined violet.

Catherine Parry. Blue over rosy red. Very double.

Ethel J. Marshall. Huge milk-white with violet stand.

Gold Bound. Double white with gold center.

Indo. Single rich blue. Yellow central blotch.

Josephine Heywood. Blue-violet with reddish stand.

Kagaribi. Chinese-red with yellow spots.

Kamoto. Sky-blue, white veins, gold center.

Mahogany. Double mahogany-red. Late.

Marjorie Parry. Double soft mauve.

Momyi-No-Taki. Early reddish. Golden centers.

Mrs. J. A. Hayden. Double white suffused violet.

Neptune. Single mahogany-red.

Patrocle. Single superb deep violet.

Proserpine. Single bright rich blue.

Violet Ray. Six petals of violet-red.



Oriental Iris for the South



Hardy Phlox

Hastings' Hardy Phlox for Dixie Gardens

PERENNIAL PHLOX, DECUSSATA

Finest and most satisfactory varieties, everblooming type, in any rich, well-drained soil. Plant in clumps or masses to insure coolness at roots. Mulching is desirable. Best in cooler locations, protected in the South from hot afternoon sun.

Blue Hill. 2½ ft. Solid mass of richest Phlox-blue. Large heads.

Bridesmaid. 2 ft. Pure white with crimson eye.

Count Zeppelin. 2½ ft. Ivory white florets with red centers.

Rosalinda. 2 ft. Soft amaranth-pink.

Louis Abemma. Wonderful white. Early.

Mary Louise. Pure snow white. Large.

Prime Minister. White with crimson eye.

Progress. A pleasing blue. Undertone lavender.

Ruby Lee. Plum-red. Strong growth.

Thor. Deep salmon-pink, red eye.

PRICES—Varieties above, 50c each; 3 for \$1.25; 6 for \$2.35 12 for \$4.45

SPECIAL HARDY PHLOX COLLECTION

One each of the 10 grand varieties described above, for Postpaid **\$3.65**



Hyemerocallis, Hyperion

A New Garden Collection

VERY CHOICE

1 each of all 6 below for \$3.45 postpaid

Extra Fine DAY LILIES

Hyperion. Finest pale citron-yellow, giant amaryllis-like flowers. June, July. 75c.

Winsome. Flushed pale pink over base color of yellow. May, June. 65c.

Dauntless. Gorgeous golden yellow. June, July. 65c.

Peggy Perry. Huge yellow-throated red-bronze. May, June. 65c.

Sovereign. Immense pale yellow-red. May. 65c.

Mikado. Yellow, flushed bronze. May, June. 65c.

NEW BETSCHER COLLECTION: ➡

1 each of 11 Day Lilies with new Hybrids, listed at right,
\$3.95 postpaid.

PEONIES .. for the South

Contrary to general opinion, Peonies are being successfully grown in all parts of the South except in the subtropical and tropical areas along the Southern Atlantic, the Gulf Coast, and in Florida.

Plant Peonies in fairly rich but well-drained soil with exposure preferably to early morning sun in the deep South. Set the roots barely under soil surface. Feed with bonemeal and pulverized sheep manure for good results.

All varieties below, heavy divisions, your choice 85c each; 3 for \$2.25; 6 for \$4.25; 12 for \$7.95. Postpaid.

COLLECTION OFFER:

One division each all six for \$3.95 postpaid

Duchess de Nemours. White. White petals around a sulphur center. Early.

Edulis superba. Pink. Mauve-pink with silver reflex. Great favorite. Early.

Felix Crousse. Red. Brilliant crimson, fragrant. Midseason. Best Southern Red.

Festiva Maxima. White. Extra large, fully double, pure white with flecks of red in center. Best of all for Southern planting!

Karl Rosenfeld. Red. Medium early. Rich, deep crimson with wavy petals.

Mme. de Verneville. Blush-white. Early. White tipped crimson with blush center. Choice.

Lovely DAY LILIES HEMEROCALLIS

THE DAY OR LEMON LILIES are superbly suited to all sections of the South, needing only a moderately good soil, drainage and plenty of warm sun to develop into heavy, vigorous and showy garden plants to last for years with very little other attention. (Note blooming dates to insure early, medium and late flowers.) The foliage is most attractive all season even when there are no flowers showing. Be sure to plant several varieties or a collection for a long season of bloom.

NEW BETSCHER HYBRIDS

D. D. Wyman. Golden tawny splashed. June, July.

Goldeni. Golden orange. Early June. 3 ft.

Gypsy. Brilliant deep orange flowers on medium stems in June.

Lemon King. Fluted lemon-yellow flowers; medium stems. Midsummer.

Modesty. Pale yellow. June.

Any of above, 55c each; any 3 for \$1.45; any 12 for \$4.95

Standard Varieties of Day Lilies

The following list contains a superb selection of varieties which will bloom from spring to late summer, often repeating in fall.

Aurantiaca. Large; sweetly scented; orange, reverse Indian yellow. 4 ft. May, June.

Dumortieri. Rich cadmium-yellow with bronzy yellow reverse. 2 ft. May.

Dr. Regel. Rich orange-yellow blooms in late April or early May. 2 ft.

Flava. True Lemon Lily. Full; clear yellow; sweetly scented. 2½ ft. May.

Kwanso fl.-pl. Double golden bronze. June, July.

Middendorf. Very fragrant; rich orange-yellow. 1½ ft. April-May.

Separate varieties, 45c each; 3 for \$1.20; 12 for \$3.95, postpaid



Peony, Festiva Maxima

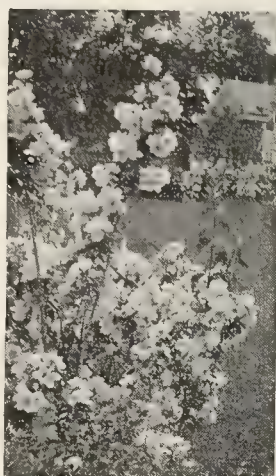
DO YOUR OWN LANDSCAPE PLANTING



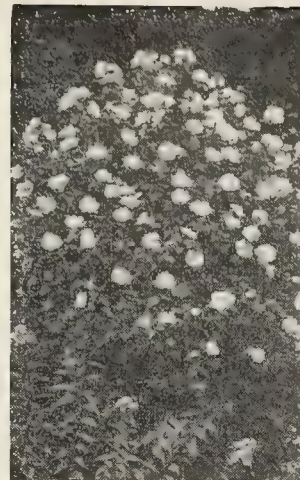
Viburnum—Snowball
\$1.25. Page 15



Hydrangea, Peegee
\$1.25. Page 15



Mock Orange, Coronarius
75c. Page 15



Althea—Rose of Sharon
60c



Almond, Double Pink
75c

All Prices of shrubs on this page include Prepaid Delivery.

Abelia

New Pink Beauty. 6 ft. A new combination of a flowering, evergreen shrub. Compact with bronze-tinged, glossy foliage and delightful pink flowers in great profusion all season. Delivered—strong plants, \$1.00 each; 3 for \$2.50; 5 for \$3.50; 10 for \$6.50.

Glossy Abelia. *A. grandiflora*. 6 ft. Described on page 20. Excellent for shade or sun, all soils. Delivered—Strong plants, 50c each; 3 for \$1.25; 12 for \$3.95.

Almond

Double Pink. *Amygdalus*. Rather dwarf, compact shrub with slender branches completely covered with double light pink flowers in early spring before leaves appear. Delivered—Strong plants, 75c each; 3 for \$1.95.

Althea, Double

Rose of Sharon; *Hibiscus syriacus*. Tall shrubs for city or congested conditions; also for hedges, screens, tall borders. Beautiful large blooms, at times almost covering the plant and a continuous bloomer all summer. Plant strong, vigorous and does well in almost any soil. All double flowering.

Ardens. Beautiful double blue-violet.

Compte de Hainault. Double; flesh.

Duchesse de Brabant. Double; red.

Jeanne d'Arc. Double; pure white.

Lady Stanley. Semi-double; light pink, splashed with carmine.

Each, heavy 2-yr. plants, 60c each; any 3 for \$1.45; 12 for \$4.95.

SPECIAL: One 2-yr. plant each of all 5 varieties of Altheas delivered for \$2.39.

Beauty Bush

Kolkwitzia amabilis. Newest, most beautiful flowering shrub for everybody with a home. Exceedingly handsome hardy ornamental from the wilds of China that grows 6 to 8 ft. high. It has long, arching branches, year-round beauty, an amazing profusion of light pink bell-shaped flowers in May and June. Clouds of flowers after 4 or 5 years old. Delivered—Strong plants, 85c each; 3 for \$2.25. Extra-heavy plants, \$1.25 each.

Barberry

Japanese. *Berberis thunbergii*. Dwarf, bushy habit. Numerous small leaves densely cover the thorny twigs. Makes a compact, impassable, hardy hedge, important for shrubbery groups. Autumn paints the foliage and fills the branches with scarlet berries. Delivered—2-yr. plants, 50c each; 3 for \$1.25.

BARBERRY, continued

Red-leaved. *B. thunbergii atropurpurea*. Similar to Japanese except with deep bronzy red foliage, getting more brilliant with summer sun. Plant in full sun for richest red foliage. Heavy plants, 75c each; 3 for \$1.95.

Beautyberry · Callicarpa

C. purpurea. For borders and clumps. Grows 3 to 5 ft. high, with graceful, recurving branches covered in August with tiny pink-tinted flowers, followed by masses of violet-purple berries until midwinter. Delivered—Heavy plants, 60c each; 3 for \$1.45.

Calycanthus · Sweet Shrub

C. floridus. Native shrub, 4 to 5 ft., thriving in shady locations. Dark green, aromatic foliage and rich chocolate-colored, extremely fragrant double flowers in early spring. Delivered—Heavy plants, 60c each; 3 for \$1.45.

Chaste Tree · Blue Vitex

V. agnus castus. Large decorative shrub or small tree with strong aromatic odor. Exquisite blue flower-spikes are borne in mid-summer. Leaves are deeply cut to star shape. Delivered—Heavy plants, 75c each.

Chionanthus

White Fringe Tree; Granddaddy's Gray Beard. *C. virginica*. Choice lawn tree with large, dark green, glossy foliage and many showy 6-8-in. panicles of pure white, feathery flowers in May and June. Delivered—Strong plants, 75c each; 3 for \$1.95.

Chokeberry

Aronia arbutifolia. Ornamental shrub with red fruit in fall and winter. Delivered—Strong plants, 75c each; 3 for \$1.95.

CAPE MYRTLE

NEW DIXIE BRILLIANT CRAPE MYRTLE. Marvelous new, richer, deeper watermelon-red and very prolific variety. (See Page 17.) Delivered—79c each; 3 for \$1.79; 5 for \$2.79; 10 for \$4.79; 25 for \$10.79.

Extra large plants, \$1.50 each.

Lagerstræmia indica. Favorite flowering shrub of the South. A heavy bloomer growing 10 to 15 feet high. Splendid for lawn specimens and gorgeous street plantings. It is difficult to transplant. Plants often remain dormant the first summer and some few never start growth. Prune severely on planting, water and cultivate carefully. Pack good soil, with no green manure, firmly about roots. Worth the hazard. **Pink, and White.** Delivered—Medium-sized plants, 60c each; 3 for \$1.50. Extra large plants, \$1.25 each.

Coralberry

Symphoricarpos vulgaris. Similar to Snow-berry except the smaller berries are coral-red, almost purple, and cluster in thick ropes along stems. The foliage is small and dark. Delivered—Heavy plants, 60c each.

Deutzias

Popular shrubs with dainty bell- or tassel-shaped flowers in heavy wreaths along their branches in early spring and summer. Plant in full sunlight with good drainage.

Pride of Rochester. Large, double, pinkish white blooms in June. 6 to 9 ft. Delivered—Strong plants, 75c each; 3 for \$1.95.

Slender Deutzia. *D. gracilis*. Dense, bushy plant with pure white flowers on drooping branches in April. 2 to 3 ft. Delivered—Strong plants, 75c each.

FORSYTHIA

Golden Bells. One of the best shrubs for the South. Stands heat, drought, and partial shade. Flowers are golden yellow, bell-shaped and bloom profusely in February and March, when flowers are scarce. 6 to 10 ft.

Fortune. *F. fortunei*. Upright, prolific bloomer. Golden yellow blossoms cover arching branches before leaves appear—grand. Delivered—Heavy plants, 75c each; 3 for \$1.95.

Greenstem. *F. viridissima*. Our best Southern variety. Stems and foliage bright green. Twisted golden yellow flowers in profusion during February and March. 6 to 8 ft. Delivered—Heavy plants, 60c each; 3 for \$1.45.

Weeping. *F. suspensa*. Most useful and popular kind. Long, pendulous shoots with bright yellow flowers along green stems. Holds steep banks and will train on wall. Delivered—Heavy plants, 75c each; 3 for \$1.95.

Goldflower

Golden St. Johnswort. *Hypericum moserianum*. Dwarf shrub, 1 ft. Beautiful foliage. The clear waxy yellow flowers all summer resemble single roses. Fine for massing or planting in front of shrubbery. Delivered—Strong plants, 85c each.

Halesia · Silver-Bell

Great Silver-Bell. *H. carolina*. Attractive deciduous shrub or tree with white, bell-shaped drooping flowers in clusters. 40 ft. Delivered—Strong plants, \$1.00 each; 3 for \$2.50.

Hamamelis · Witch Hazel

H. virginica. Ornamental woody shrub for general planting in Southern yards. Hand-some foliage is brightly colored in fall, followed by bright yellow flowers in very late fall or early winter.

Delivered—Heavy plants, 75c each; 3 for \$1.95

Bush Honeysuckles

Japanese. *Lonicera morrowi*. 4 to 6 ft. Dark green foliage. Spreading branches covered in early spring with white flowers which turn to shades of yellow, followed by small fruits or berries from June to August. Thrives most anywhere.

Delivered—75c each; 3 for \$1.95.

Tatarian. *L. tatarica rubra*. Beautiful bushy shrub, 8 to 10 ft. high, with wide spread. Simply covered with flowers during late spring and summer, followed by red berries in late summer. 75c each; 3 for \$1.95.

Winter. *L. fragrantissima*. During January and February, when flowers are scarce, it is covered with intensely fragrant, creamy white blooms to delight the neighborhood. Strong-growing, rounded shrub with ever-green foliage in the South.

Delivered—60c each; 3 for \$1.45; 10 for \$4.45.

HYDRANGEAS

About the most showy plants in cultivation. They transplant easily, have no diseases and bloom through the summer when flowers are scarce. Plant in masses, hedges and foundations. Prefer moist, fertile, well-drained soil. (See our Spring Catalog for Blue Hydrangea.)

Hills of Snow. Summer Snowball. *H. arborescens grandiflora*. Shrub 3 to 4 ft. high, with large rich green leaves and huge white heads of flowers. Blooms almost all summer—a gorgeous display. Some claim it is the greatest shrub in existence.

Delivered—Strong plants, \$1.25 each.

Pegee. Hardy Hydrangea. *H. paniculata grandiflora*. 4 to 5 ft. Huge white cone-shaped panicles of bloom from midsummer until fall, on gently arching stems over large rich green leaves. The great favorite.

Delivered—Strong plants, \$1.25 each.

Jasmine

Florida. *Jasminum floridum*. Vigorously growing spreading shrub with rather large primrose-yellow blooms in summer. Strong plants, 75c each; 3 for \$1.95.

January. Winter Jasmine. *J. nudiflorum*. Graceful, spreading, semi-trailing shrub. Bright rich yellow, trumpet-shaped flowers in January and February.

Delivered—Strong plants, 75c ea.; 3 for \$1.95.

Pink. *J. stephanense*. Semi-trailing hybrid Jasmine with fragrant, pale pink flowers in clusters in spring. Delivered—Strong plants, 85c each; 3 for \$2.25.

LILACS

Syringa. Our fragrant old favorites. They grow about 8 feet tall, are nicely shaped and give us a wealth of beautiful bloom in long, cone-shaped heads or spikes about April.

Purple. *S. vulgaris*. The common old-fashioned purple variety, familiar Lilac of our grandmothers' gardens. Hardest and easiest grower. Delivered—85c each; 3 for \$2.25.

White. *S. vulgaris alba*. The old-fashioned Lilac that everybody knows. Delightfully fragrant. Delivered—Medium size, 85c each.

Persian. *S. rothomagensis*. Better adapted to Southern climate than *S. vulgaris*. Large, loose panicles of lovely fragrant lilac-colored blooms. Delivered—75c each; 3 for \$1.95.

Kerria · Japanese Rose

Double Globeflower. *K. japonica flore-plena*. Attractive and graceful shrub, 6 to 8 ft. tall, for foundations and screens. Arching green branches and rose-like leaves. Rich yellow globe-shaped flowers resembling Lady Banksia roses in summer. Delivered—Strong plants, 85c each; 3 for \$2.25.

Meratia · Wintersweet

M. praecox. Moderate-growing deciduous shrub producing an abundance of intensely fragrant yellow flowers along the stems in midwinter. Hardy.

Delivered—Strong plants, \$1.00 each; 3 for \$2.50.

Mock Orange · Philadelphus

Coronarius. Fine upright form; vigorous-growing branches. Very fragrant, creamy white single blossoms.

Delivered—Extra-heavy plants, 75c each; 3 for \$1.95.

Virginal. Newer type. Largest (2½ in.) semi-double, sweet and snow-white. Longest blooming sort. Should be in all plantings.

Delivered—Heavy plants, 85c ea.; 3 for \$2.25.

Pearl Bush

Exocorda grandiflora. 8 to 10 ft. high with richest waxy white flowers completely covering the shrub in early spring. Plant for its beautiful mass effect.

Delivered—Strong plants, 60c each; 3 for \$1.50.

Flowering Pomegranate

Punica granatum rubra. Shiny leaved, bushy shrub, 6 to 8 ft., double 1 to 1½-in. orange-red flowers in profusion from May through the summer. Hardy to about 15 degrees; protect in severe freezing weather.

Delivered—Strong plants, 75c ea.; 3 for \$1.95.

Purple-leaf Plum

Prunus pissardi. Quick-growing, ornamental specimen for lawn or heavy plantings. Purple foliage. Delivered—Strong plants, \$1.00 each; 3 for \$2.50.

Flowering Quince

Japanese Quince. *Cydonia japonica*. Beautiful cut-flower as well as for garden effect. Slow-growing shrub, making an impassable flowering hedge. Attractive in spring, blooming in great flame-colored masses just as the glossy leaves are coming out. 4 to 8 ft. tall.

Delivered—Strong plants, 60c each; 3 for \$1.45.

NEW AFTERGLOW QUINCE

(Plant Patent Applied for.)

We are privileged to introduce this loveliest of lovelies—an exceedingly large, semi-double flowering, early-blooming Quince the like of which has never been known before. Giant, pure white flowers delicately tinted pink at petal tips, profusely borne in earliest spring. Strong plants, Postpaid. \$2.95 each. (See front cover.)

Scotch Broom

Cytisus scoparius; *Genista*. A profusion of rich, deep yellow, artistic pea-like flowers are borne singly along the rich green branches in April and May. Beautiful shrub. Delivered—Medium-size plants, 60c each; 3 for \$1.50.

Sourwood

Oxydendron arboreum. Ornamental shrub or tree with panicles of white flowers in summer and handsome foliage turning brilliant scarlet in autumn. Delivered—Heavy plants, 75c each; 3 for \$1.95.

EASILY GROWN SPIREAS

These shrubs are widely planted, do well in most soils and situations, are effective in borders, masses, and Van Houtte in specimen plants. They are the most popular deciduous shrubs that we grow. Doing wonderfully in the South in most any situation and enduring neglect, you cannot plant too many.

Anthony Waterer. Crimson Spirea. *S. bumalda*. Compact, low-growing shrub, 2 to 3 ft. high. Dense green foliage with leaves variegated pink and white on new growth. Rosy crimson flowers in wide, flat clusters on erect stems, through the summer. Valuable in front of other shrubbery or as a border. Delivered—Strong plants, 85c each; 3 for \$2.25.

Billiard Pink. *S. billiardi*. Grows to 6 ft., with dense spikes of bright rose-pink flowers crowning the erect, brown, hairy branches. Desirable for shrubbery groups, natural plantings, and moist places. Attractive bloom from June to September.

Delivered—Strong plants, 85c ea.; 3 for \$2.25.

Bridal Wreath. Bridal Bower. *S. vanhouttei*. Most useful of all hardy shrubs. In full bloom in spring it is a mass of white flowers on spreading branches often drooping to the ground. It never fails to attract attention. Grows 6 to 8 ft. high and 20 ft. across.

Delivered—Heavy plants, 60c each; 3 for \$1.45; 12 for \$3.95.

Snow Garland. *S. thunbergi*. Extra-early-flowering Spirea, the pride of the Southland. Of spreading growth, its slender, arching branches are a perfect mass of miniature white flowers before the feathery foliage appears. 2½ to 4 ft. high, for foundations and edging. Delivered—Strong plants, 85c each; 3 for \$2.25.

Tamarix · Salt Cedar

Slender, rather irregular, upright shrub or small tree to 12 ft., with feathery, graceful foliage and airy heads of pink flowers in profusion. Splendid florist and home-cutting material, as background plants, even as specimens. It thrives except with too much lime.

Delivered—Heavy plants, 85c each; 3 for \$2.

VIBURNUM · SNOWBALL

Hardy, tree-like shrubs with large snowball-like, showy white flowers. As specimen plants and for grouping it is gorgeous.

Common Snowball. *V. opulus sterile*. Covered in early spring with perfect balls of snowy white flowers. It is of easiest culture; reaches 10 to 12 ft. A beautiful sight. Delivered—Strong plants, \$1.25 each; 3 for \$2.95.

COLORFUL WEIGELAS

Diervillas. Beautiful April- and May-flowering shrubs. Grand for borders, grouping, and specimen plants in sun or partial shade. Flowers trumpet shaped, clustered thickly along the branches to almost hide the foliage. Flowers on new wood.

Candida. White. Most vigorous variety, growing 5 to 6 ft., and thriving in light soil. Flowers are snow-white, large and quite showy. Delivered—Strong plants, \$1.00 each; 3 for \$2.50.

Eva Rathke. Red. Spreading shrub 3½ to 4 ft. high. Crimson flowers with white throats, especially showy in light soils, fine in partial shade. Delivered—Strong plants, \$1.00 each; 3 for \$2.50.

Rosea. Rose-pink. Best of all. Abundant flowers along arching canes in May with scattering bloom all summer. 4 to 6 ft. Delivered—Extra-strong plants, 75c each; 3 for \$1.95.

SHOWY VINES AND CREEPERS

Clematis

These hardy climbers are most valuable for training around and over pillars, rockwork, pergolas, arches or gateways.

Jackman. *C. jackmani*. Succeeding only in partial shade, this huge purplish violet flowered variety is simply beautiful. Very large, four-petaled flowers come in mid-summer, laid flatly against the rich foliage. (Not for lower South planting.)
Delivered—\$1.45 each.

Sweet Autumn. *C. paniculata*. Beautiful, luxuriant growth with delicate foliage. Blooms profusely in late summer and early fall in immense sheets of small white, sweet-scented flowers, followed by feathery seed clusters. Give support or grow on banks. Easiest Clematis to grow and makes the most showy flowering vine.
Delivered—85c each; 3 for \$2.25.

American Bittersweet

Celastrus scandens. Very ornamental vigorous vine for trellises, walls, banks or rockwork. Bright red berries last well through winter.
Delivered—85c each; 3 for \$2.25.

Coral Vine

Mountain Rose. *Antigonon leptopus*. Rather tender but vigorous growing and striking climber with racemes of loveliest clear rose flowers in summer and fall. For middle and lower South only. Orders booked for spring delivery only.
Delivered—Tubers, \$1.00 each; 3 for \$2.50.

Honeysuckle

Hall's Japan. *Lonicera japonica baliana*. Rampant climber with dark evergreen foliage and intensely fragrant trumpet-shaped flowers of white, deepening to cream-yellow.
Delivered—75c each; 3 for \$1.95.

Scarlet. Trumpet Honeysuckle. *L. sempervirens*. Attractive vine with blue-green foliage and showy coral-red or scarlet trumpet-shaped flowers followed by scarlet berries.
Delivered—75c each; 3 for \$1.95.

Silver Lace Vine

Polygonum auberti. One of the loveliest of strong growing, showy Southern vines. Covered with foamy sprays of white flowers in late summer.
Delivered—\$1.00 each; 3 for \$2.50.



Coral Vine (*Antigonon leptopus*)
Tubers, \$1.00 each

Ivy

Boston. Japanese Ivy. *Ampelopsis veitchii*. Greatest clinging vine. It covers immense surfaces in a short time after started and clings tightly to most anything that stands still. Broad, three-lobed, deep glossy green leaves in summer, turn gorgeous red, scarlet and yellow in autumn. Delivered—75c each; 3 for \$1.95; 12 for \$5.95.

Virginia Creeper. American Ivy. *A. quinquefolia*. Same growth except not so dense in foliage. It has five lobes to the glossy green leaves, giving it a more airy and open appearance. In autumn its brilliance of changing colors is beautiful.
Delivered—75c each; 3 for \$1.95.

English. *Hedera helix*. The best evergreen for covering brick, concrete and stone walls or as a ground-cover. It grows in sun or dense shade. Rapid growing after established, with large, glossy, dark evergreen leaves. Delivered—3 for \$1.00; 12 for \$3.45.



The South's Evergreen English Ivy
3 for \$1.00; 12 for \$3.45

Vinca

Minor. Periwinkle. Evergreen ground-cover for shady or sunny places. Nice for rock walls, slopes, etc. Blue flowers.
Delivered—6 for \$1.25; 12 for \$1.95; 100 for \$11.95.

Wistaria

Purple. *Wistaria sinensis*. Rapid-growing vine with great drooping racemes of lilac-purple, pea-shaped flowers. When well established more bloom may be secured by pruning back the lateral shoots to short spurs. By grafting scions from fine blooming plants on strong seedling stocks we obtain sure-blooming plants. It will pay you to get these fine grafted plants. Delivered—\$1.00 each; 3 for \$2.75.

White. Grafted. Delivered—\$1.25 each; 3 for \$2.95.



Our Grafted Purple Wistaria. \$1.00
Our Grafted White Wistaria. \$1.25

BEST HEDGE PLANTS

Prices 50 or more plants of the same size and variety will be sold at the 100 price. Write for special prices on lots of 250 or more.

Abelia

Grandiflora. Best hedge pruned or natural. Set plants 2 to 3 ft. apart. See page 20. F. O. B.—Well rooted, \$25.00 per 100. Heavy young plants, bare roots puddled, \$35.00 per 100.

Bamboo

Timber. *Phyllostachys*. Ideal for tall hedges, screens, and windbreaks. 25 to 40 ft. tall.
F. O. B.—Clumps, \$1.50 each; 12 for \$15.00.

Cherry Laurel

Carolina. (See p. 22) Ideal for thick bright green evergreen hedge of large size. Excellent for screen plantings. Write for prices.

Boxwood

Common. *Buxus sempervirens*. Popular old-fashioned hedge; trims beautifully and fine natural growth. Set 6 to 12 in. apart. See page 20.

F. O. B.—6-in. plants, puddled roots, \$17.50 per 100.

True Dwarf. *B. sempervirens suffruticosa*. Description on page 20. Extensively used for edging and low hedges. Grows 4 feet, but may be held to 6 in. Set 6 to 10 in. apart.

F. O. B.—4-in. plants, roots puddled, \$22.50 per 100.

Privets

Amur River South. *Ligustrum amurense*. Can be trimmed and sheared in any shape. Dense, heavy growth, practically evergreen South.

F. O. B.—12 to 24 in., \$7.95 per 100. 2 to 3 ft., \$9.95 per 100. Write for prices on other sizes.

Japanese. *L. japonicum*. Description on page 22. Large-leaved evergreen for tall hedges and back-grounds. Set 12 to 30 in. apart.

F. O. B.—1 to 2 ft., bare roots, \$20.00 per 100.

Planting Hedges

Dig trench 18 inches deep and mix half and half well-rotted manure and soil. Settle well by soaking before setting plants.

Dixie Brilliant

THE NEW SUPER
EVERBLOOMING
RED CRAPE
MYRTLE



A brighter, richer, deeper-colored, more prolific and more beautiful Super everblooming Crape Myrtle.

Positively the finest Crape Myrtle yet developed.

NOT PATENTED • NO RESTRICTIONS

*Grow All the New Plants
from Cuttings You Wish!*

BOOK YOUR ORDER EARLY

GUARANTEED TO BLOOM THE FIRST YEAR

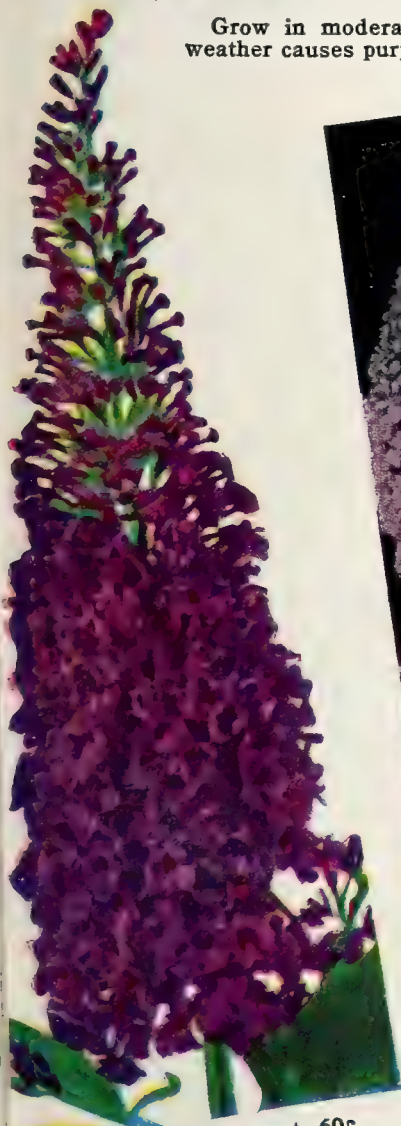
Strong, well-rooted, well-branched
field-grown plants. DELIVERED

SAME LOW PRICES

1 plant for . . . \$0.79	10 plants for . . . \$4.79
3 plants for . . . 1.79	25 plants for . . . 10.79
5 plants for . . . 2.79	100 plants for . . . 39.79

NEWEST EVERBLOOMING BUTTERFLY BUSHES

Grow in moderate rich, drained, sunny beds with moisture. Hot weather causes purplish coloration in reds and pinks.



New Buddleia, Dubonnet. 60c



New Buddleia, Orchid
Beauty. 60c



© Tip of White Bouquet. 75c



© Buddleia, Royal Red. 75c

Dubonnet. Most exciting new introduction. Immense spikes of rich purplish wine-color. Distinctive all summer cut-flower. Delivered—60c each.

Eleanor. New type with tremendous long, well-filled spikes shading from pure lavender to Eleanor blue. Foliage also is especially attractive. Delivered—60c each.

All Five for \$2.95

(Value \$3.30)

One each of all 5 of these newest and finest everblooming summer beauties.

Postpaid to you for only \$2.95

Orchid Beauty. Splendid new variety of soft cattleya-lilac with brilliant orange eye. Bloom spikes exceptionally large. Delivered—Strong plants. 60c each.

Royal Red. Patent 556. New and best. Symmetrical, fragrant, brilliant reddish flowers. Flower-spikes often over 9 inches long. Delivered—Strong plants. 75c each.

White Bouquet. Patent 536. The new glistening white, with long fragrant sprays like white lilacs. Medium height, rich foliage. Delivered—75c each.

BEST EVERGREEN CONIFERS

Save high labor and transportation costs by planting these smaller mail-size plants, so easily and quickly grown

RETINOSPORA · CHAMAECYPARIS

The Chamæcyparis family includes the Retinospora and Cypress groups, which are similar. Plants are rather pyramidal, densely foliated with fine leaves and some flattened like arborvitæ. They grow best in moist, well-drained soil in partial shade. May be kept small by spring pruning. Grand for lawns and small sizes for boxes and tubs. They are beautiful and easily handled except in the lower South where the heat tends to burn the foliage and often causes loss of the plant. For the lower South we recommend oriental (Orientalis) type of arborvitæ.

Plume. *C. pisifera plumosa*. One of the most pleasing and popular varieties, often called Plumed Cypress. It grows 15 to 20 ft. high, with somewhat pendulous branches. The bright grayish green, finely cut foliage has a plume-like, feathery appearance, quite similar to a finely cut fern frond. It succeeds in most situations and is often beautifully grown in tubs, porch-boxes, and urns. It makes a wonderful specimen when kept sheared and is very popular.

Mail size, \$1.00 each. Delivered.

Golden Plume. *C. pisifera plumosa aurea*. Rapid-growing, very graceful tree with rich golden green foliage arranged in billowy plumes. It grows about 15 ft. high, of pyramidal form and with somewhat drooping branches. The finely cut golden foliage makes it outstanding in appearance and it is especially valuable as a contrast in color to the dark green of most of the other evergreens in foundation and group plantings.

Mail size, \$1.00 each. Delivered.

Lawson Cypress. *C. lawsoniana*. A very graceful plant, 10 to 15 ft. high, broad at base, of erect habit, tapering to a point at the tip. Branches droop with glaucous tips. Under surface of foliage is silvery and upper surface is dark green. Prefers a dry, well-drained situation and makes a handsome specimen with its crowded, pendulous, fern-like and feathery branchlets from short, spreading branches. An ideal lawn specimen.

Write for prices.



Indian Cedar (*Cedrus deodara*).

Veitch's Moss. *C. pisifera squarrosa veitchi*. This is the most attractive conifer of them all. The soft, pleasing to touch, moss-like, dense, fluffy, very finely divided foliage of steel or silvery blue-green coloring is delightful. Extra fine for urns, boxes, tubs when kept sheared, and blends well yet gives variation to other greens in plantings.

Mail size, \$1.00 each. Delivered.

CEDARS

The commonly called "Virginia Cedar" is a Juniper. See page 19. The true Cedars are particularly adapted to the South, hardy south of Ohio.

Deodar or Indian. *Cedrus deodara*. Pictured at left, this is considered the handsomest of all tall-growing conifers. Attains over 50 ft. in height, lower branches gracefully sweeping the ground. Foliage is feathery and of the popular blue-green color. Tree shape is pyramidal, growing more stately with age. Succeeds admirably in this climate. Magnificent.

Write for prices.

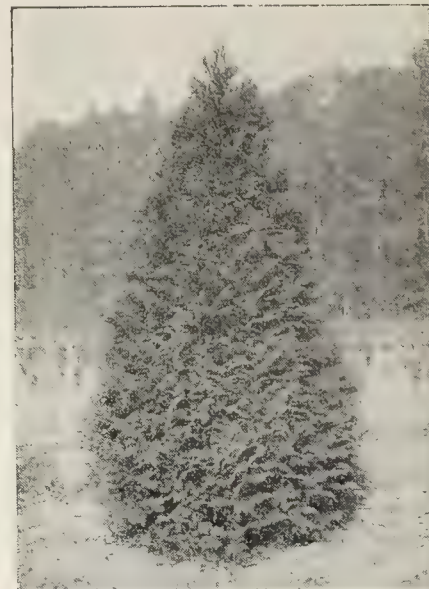
Cunninghamia

China Fir. *C. lanceolata*. Unique and attractive evergreen coniferous tree, closely allied to cryptomeria. Stiff, sharp-pointed, flattened lance-like, 2½-in. leaves with broad white bands beneath. Inconspicuous flowers in terminal clusters are followed by 2-in. roundish cones with thick-pointed scales. Quite hardy in the South, growing to 50 ft. tall. Rapid, symmetrical grower with horizontal branches. Very interesting specimen tree; useful with other tall evergreen conifers in groupings, backgrounds, and screens. Its flat branches lend interest and variety the year around.

Write for prices.

SPECIAL SHRUB NOTICE

All plants offered are sizes or kinds sent without heavy balls of soil around the roots to save the prohibitive crating and express charges. We will have our customary display of the larger, specimen plants at our Atlanta retail store only, whence they may be quickly taken and planted by the customer.



Golden Plume Retinospora. \$1.00

HASTINGS' EVERGREENS

Depend on Hastings for all your planting needs. Know you are planting right and dealing with the most reliable nurserymen-seedsmen. That self-satisfaction is worth a lot. When the job is finished, you have a planting to be proud of and you find it has actually cost you less than when a planting is done haphazardly.

HOW TO PLANT EVERGREENS



① DIG HOLE A FOOT LARGER AND DEEPER THAN BALL OF EARTH. PROVIDE GOOD LOAMY TOP SOIL TO FILL AROUND BALL.



② SET TREE IN HOLE TRIFLE LOWER THAN IT STOOD IN NURSERY

③ FILL GOOD TOP SOIL UP AROUND BALL. PACK FIRMLY WITH FEET OR SETTLE BY FILLING HOLE WITH WATER.

④ LOOSEN BURLAP AT TOP OF BALL AND ROLL BACK OR CUT OFF

⑤ FILL HOLE WITH SOIL. PACK FIRMLY AND LEAVE TOP OF GROUND COVERED WITH LOOSE EARTH, OR BETTER MULCH WITH STRAWY WELL ROTTED MANURE.

HGM
©

SOUTHERN JUNIPERS

MOST HEAT-RESISTANT OF ALL

The Junipers are in a class by themselves as evergreens of high quality, brilliant coloring and wide range of form and manner of growth. Silver-green, blue-green and deep green types; low, spreading shapes, upright cones and pyramidal shapes offer a great variety from which to choose. All are hardy and long-lived.



Pfitzer Juniper. \$1.00

PFITZER JUNIPER

J. chinensis pfitzeriana. Really handsome, the most useful coniferous evergreen and most popular of all spreading types. Branches are long, graceful and densely furnished with very dark green, plume-like foliage. This rich gray-green color is held in winter and is beautiful in its flowing lines, so desired in landscaping. It withstands severest pruning if it outgrows its location. Most frequently used for edging large plantings, for banks and as entrance markers for driveways and walks. Often used as specimen plant markers and in foundation plantings. It stands the smoke, soot and dirt of the city, being one of the few plants standing conditions at filling stations with their fumes from gasoline, grease and oil. It is a sturdy, hardy grower, most satisfactory for small and large plantings. The indispensable evergreen.

Special mail size, \$1.00 each; 3 for \$2.45.
Delivered.

Ashford. *Juniperus communis asbfordi*. Tall, columnar growth and very resistant to adverse conditions. Similar to Irish Juniper except softer in appearance. Very pleasing soft silvery green, medium-length needles and unusually well suited to our climate. **Special mail size, \$1.00 each. Delivered.**

English. Common Juniper. *J. communis*. Grows 15 to 20 ft. tall; lends itself admirably to formal uses as a specimen, for use in pairs, for foundation plantings and in groups. Its feathery looking foliage is a beautiful silvery blue color. Not so slender as the Irish.

Special mail size, \$1.00 each. Delivered.

Irish. *J. communis bibernica*. Grows 15 to 20 ft. tall. Slender, erect, dense columnar growth and with very rich sage-green foliage. Leaves are small and compact, with ends of twigs held upright. This most slender Juniper is very valuable for formal effects, for end use in foundations, mass plantings, corner or entrance markers. **Special mail size, \$1.00 each. Delivered.**

Swedish. *J. communis suecica*. Tall, columnar form with larger leaves than the Irish and the tips of branches bend outward, as shown in the picture. The glaucous green color is lighter and more blue than Irish Juniper, in fact, more beautiful. Splendid for formal effects. Slender, over 15 ft. tall ultimately, and easily grown in most soils and situations. Valuable in grouping, for specimens, and in pairs for marking driveway entrances, porch entrances, etc. Odd, distinct and attracts attention.

Special mail size, \$1.00 each. Delivered.



Swedish Juniper. \$1.00

VIRGINIA CEDARS

Native Red Cedar. *J. virginiana*. One of the hardiest and most satisfactory of our native southern conifer evergreens. The red cedar is full, tall, very handsome dark green when grown as a lawn specimen from nursery-grown plants.

It is hardy, withstanding the severest weather of winter as well as intense summer heat in all sections of the South and farther north on practically any soil. A real all-purpose and all-place tree.

Special mail size, \$1.00 each. Delivered.

ARBORVITAE • THUJA

The American type (*T. occidentalis*) is of open growth with short, horizontal, flat-pressed branches and pleasant fragrance. The Oriental or Chinese type (*T. orientalis*) is more compact with flattened, upright branches and better adapted South, standing sun, heat and drought. Use only *Orientalis* kinds in lower South.

American Pyramidal. *T. occidentalis pyramidalis*. Upright, spire-like with light green foliage. Tall, formal appearance for urns and outdoors, usually used in pairs or for center plants. **Special mail size, \$1.00 each. Delivered.**

Bonita. *T. orientalis, Bonita*. Similar to Dwarf Golden except foliage is bright, rich green with no golden tinge. Many prefer this uniform, rich green color and we can furnish matched pairs or more in Atlanta in most any size. Mail size plants easily grow to well matched plants of large size without extra care. Very impressive. **Special mail size, \$1.00 each. Delivered.**

Dwarf Golden. Berckman's Golden. *T. orientalis aurea nana*. Most desirable dwarf conifer and popular for urns, tubs, boxes, and general plantings. Very compact, rounded cone shape. Foliage bright green, deepening to bright golden green. This famous Georgia variety is the most useful, widely planted and satisfactory Arborvitae. It is very colorful the year around and its golden tips add attractiveness and variety to mixed evergreen plantings. Very uniform in shape and growth so it is easy to furnish matched pairs or more. **Special mail size, \$1.00 each. Delivered.**

Goldspire. *T. orientalis aurea conspicua*. Compact, erect, pointed tree, 15 to 20 ft. tall, retaining its branches near the ground. Foliage is deep golden yellow, artistic for specimens or groups. Easily grown in most soils and situations. **Special mail size, \$1.00 each. Delivered.**

TSUGA • Hemlock

Tsuga canadensis. Beautifully shaped deep green tree for lawn specimen, background or may be trimmed severely into shapes as for hedges. Fast displacing *Cedrus deodara* in upper South. **Special mail size, \$1.50 each. Delivered.**



Pyramidal Arborvitae. \$1.00



Pink Beauty Abelia. \$1.00

ABELIA

Glossy. *Abelia grandiflora*. The Everblooming Evergreen. It's an everblooming evergreen in the South, 5 to 6 ft. high unless kept trimmed. White bell or tubular flowers from spring until frost on gracefully arching branches.

Mailing-size plants, 50c each; 3 for \$1.25; 12 for \$3.95. Delivered.

Pink Beauty. Lovely new evergreen Abelia with daintiest sweet flowers of lovely pink and leaves of glossy green. Strong plants, \$1.00 each; 3 for \$2.50; 5 for \$3.50; 10 for \$6.50. Postpaid.

AUCUBA

Golddust. *A. japonica variegata*. Best and broadest leaved evergreen for shady places. Grows 4 to 5 ft. high. Dark green leaves with striking yellow spots and flakes and flaming red berries in fall and winter. Give moist, shady location or among other shrubs for shade. For foundation and porch plants.

Mailing size, \$1.00 each. Delivered.

CAMELLIA SASANQUA

Snow on the Mountain. Hardest of the Camellias and about the earliest to bloom in the fall. Medium double, pure white flowers in great profusion. Superb evergreen shrub. \$1.25 each; 3 for \$2.95. Delivered.

CAMELLIA JAPONICA

LOVELIEST of all evergreens for the warmer sections of the South and farther north with protection. Very broad, dark green leaves with gorgeous wax-like flowers in late winter, literally covering the plants. Well-rooted mailing-size plants.

Double Red

Double White

Double Pink

Double Variegated

Your Choice, \$1.25 each; 12 for \$10.95. Delivered

SPECIAL:

One each of all 4 colors for **\$3.95**. Delivered

Colorful INDIAN AZALEAS

To add brilliance to every Southern Garden in early spring. Large flowers hiding vigorous plants completely when in bloom. Plant Azaleas in loamy soil richly supplied with humus in considerable shade. Mulch plants with Vermiculite.

Pride of Mobile. Rapid growing beauty with huge flowers of brilliant watermelon pink. Glorious!

Formosa. Tremendous purplish, pink flowers to color everyone's garden picture.

Daphne Salmon. Light salmon flowers of large size on upright growing plants.

Indica Alba. Huge pure white flowers resembling a huge bank of snow when in bloom.

INDIAN AZALEA COLLECTION

One heavy plant each of all four varieties sent pre-paid for. **\$5.95**

Individual varieties \$1.75 each
3 for \$4.50.

ORDER EARLY PLEASE!

CLEYERA JAPONICA

A very interesting and useful evergreen related to and growing under similar conditions as Camellias. Perfectly suited to Southern use. Deep rich green foliage. Many, small, fragrant, creamy white flowers in early summer followed by small red berries in fall and winter. Stands pruning and makes fine foundation shrub or specimen. Mailing size, \$1.25 each. Delivered.

COTONEASTER

Franchet. *C. francheti*. Upright shrub with arching branches. Artistic with pinkish flower clusters in spring and rich orange-red fruits in winter. Mailing size, \$1.00. Delivered.

ELAEAGNUS

Pungens fruitlandi. Great wide-spreading broadleaf evergreen shrub, quickly reaching 6 ft. or more, with handsome, silvery, gray-green foliage. Inconspicuous flowers are followed by red berries. Rapid growing in sun or shade. Fine for corner and foundation plantings where it has space enough to grow as it likes. Especially valuable for roadside and seashore planting. Mailing size, \$1.00. Delivered.

EVERGREEN BARBERRY

Sargent's. *Berberis sargentiana*. A very attractive though thorny, low-growing evergreen for full sun or partial shade. Leaves dark green, long and slender. Very handsome. Mailing size, \$1.00. Delivered.

BOXWOOD

Common Box. *Buxus sempervirens*. For old-fashioned hedges and beautiful specimen plants. Leaves are small, rich dark glossy green and cover the whole plant in a dense and compact, wide pyramidal form. Slow grower to over 10 ft. with an equal spread. It may be pruned to any shape. The Box of Colonial gardens, famous and treasured wherever architecture is in keeping with the landscaping. It increases in value yearly. See prices on page 16.

True Dwarf Box. *B. sempervirens suffruticosa*. Used for low hedges, edging, boxes, and urns. Dwarf, compact, extremely slow-growing, reaching 4 ft. It may be pruned to any shape or low height and kept the same for many years. Small leaves are lustrous green. Intricate designs in Boxwood gardens and edging to formal beds and borders, are best carried out with Dwarf Box. It becomes extremely valuable with age. See prices on page 16.



Camellia japonica. Loveliest of all flowers. \$1.25

EVERGREENS

of the old South

PLANT GARDENIAS FOR LASTING BEAUTY

Gardenias are the sweetest and most beautiful of all broadleaf evergreens and should be in every home planting in the South. They are reasonably hardy. Ideal for corsage flowers.

The South's New Everblooming Gardenia—60c

Gardenia fortunei. Sensational Cape Jasmine discovery, blooming heavily in early summer with perfect flowers and repeating from time to time all season until frost. Plant them in full sun or partial shade and enjoy the blooms that city florists sell for a dollar or more each. Grow your own lovely corsage Gardenias. Reasonably hardy. Only limited supply, so order early.

Mail size plants, delivered—60c each; 5 for \$2.75; 10 for \$4.95.



Everblooming Gardenias



Magnolia grandiflora

SOUTHERN MAGNOLIA

M. grandiflora. Lawn tree of great beauty, thriving in moist, porous soils and liking fertility. Leaves large, thick, waxy, dark evergreen. Flowers very large, highly perfumed, and pure white, followed by scarlet seed in cones.

Delivered—Extra heavy plants, \$1.50 each.

SWEETEST TEA OLIVES (Osmanthus)

Fragrant Tea Olive. *O. fragrans.* Just about the sweetest shrub in all the world and so indicative of the glorious old South! Superb evergreen of strong growth having clusters of tiny, very penetratingly fragrant, white flowers during the fall months and during warm periods of winter and early spring. Ideal for large hedges, screen and foundation plantings. The sweet perfume penetrates to all areas around. Mail size, \$1.25 each; 3 for \$2.95; 12 for \$10.95. Post-paid.

Fortune Olive. *O. fortunei.* Beautiful 6-ft. evergreen shrub, hardy in the South. Holly-like leaves, 4 in. long. Fragrant white flower clusters in spring. Stands shade, is thrifty, holds its deep green color in drought; a luxuriant plant. Fine for specimens, grouping, borders and hedges. Mail size, \$1.25 each. Delivered.

PITTOSPORUM

P. Tobira. One of choicest evergreens for general Southern planting withstanding temperatures to within 10 degrees of zero when dormant. Ideal for foundation or specimen plantings. Stands heavy shearing. Mail size, \$1.00 each; 3 for \$2.75. Delivered.

HOLLIES For the South

American. *Ilex opaca.* Our native Holly, with large, glossy, prickly leaves and beautiful red berries. It can be sheared or left to develop a tree. Many produce red berries. Typical of Christmas.

Mail size, \$1.25 each. Delivered.

Burford Chinese. *I. cornuta burfordi.* Broad, 10 to 20-ft. shrub, hardy in the South. Leaves have one strong spine at tips and of deepest glossy green. Large shining red berries. Handsomest of all broadleaf evergreens and finest of all Hollies for Southern plantings. Mail size, \$1.25 each. Delivered.

Chinese. *I. cornuta femina.* Heavy growth of richest glossy green. Leaves quite spiny. Red berries borne profusely. Interesting foliage variation from others. Very satisfactory for Southern climate. Mail size, \$1.25 each. Delivered.

Japanese. *I. crenata.* Evergreen shrub to 15 ft. Wavy-toothed, oval leaves and black berries. Mail size, \$1.25 each. Delivered.

Yaupon. *I. vomitoria.* Spreading evergreen shrub with small oval or oblong leaves. Produces small red berries abundantly for winter effect. Mail size, \$1.00 each. Delivered.



Holly, Burford Chinese

LAURELS ARE VIGOROUS

Carolina Cherry. *Laurocerasus caroliniana*. Bright green, glossy foliage. Natural pyramidal form for specimens and groups.

Mail size, 60c each; 3 for \$1.50; 12 for \$4.95. Delivered.

English. *L. officinalis*. Grows 15 ft., but may be kept trimmed. Spreading shrub with broad, shining, rich green foliage. For foundation and specimen plants.

Mail size, \$1.25 each. Delivered.

EVERGREEN LIGUSTRUM · PRIVET

Glossy. *L. lucidum*. Best dwarf, large-leaved evergreen shrub. Leaves thick and dark shining green, making compact, dense growth. Fragrant white flowers in spring are followed by blue-black berries through the winter. Hardy south of Ohio River. For foundation plantings, hedges and specimens.

Mail size, \$1.00 each; 3 for \$2.50. Delivered.

Japanese. *L. japonicum*. Upright shrub, quickly attaining 15 ft., with large, glossy, dark green leaves. For tall hedges, screens, foundations and grouping. Mail size, 75c each; 3 for \$1.75; 12 for \$5.75. Delivered.

USE SMALL SIZES FOR ECONOMY

Listed on these pages are mail or delivered size shrubs and evergreens. These are small but well-rooted plants that transplant far more easily and safely and are much less expensive than larger ones. Give them good care and save tremendously in your landscape plantings.



Euonymus patens—Siebold Burningbush. \$1.00

SOUTHERN EUONYMUS

Siebold Burningbush. *E. patens*. Does well in almost any situation. Very ornamental, of easy culture, standing sun or shade. Glossy, leathery, bright green foliage and bright red winter berries. Compact, graceful shrub, practically evergreen, spreading or climbing against wall or tree. Free of insects and disease. Heavy mail size, \$1.00 each. Delivered

PYRACANTHA

Laland Firethorn. Evergreen Hawthorn. *P. coccinea lalandi*. Handsome 10 to 12-ft. evergreen shrub with small, narrow leaves and tiny white flowers. Bright blood-orange berries all along branches. For entrance markers. Mail size, \$1.00 each. Delivered.

Chinese Firethorn. *P. yunnanensis*. Similar to Laland except spreading growth and brilliant scarlet berries, which are relished by birds. Mail size, \$1.00 each. Delivered.



Mahonia—Leatherleaf Hollygrape. \$1.25.

PHOTINIA

Glabra. Great Asiatic broadleaf 10-ft. evergreen with large leaves of rich shiny green. Effectively used for tall foundations, screens, groupings and massing. Mail size, \$1.25 each. Delivered.

Serrulata. Very conspicuous, fast-growing, ornamental and interesting Chinese evergreen shrub. Young growth and foliage reddish, changing rich shining green, showing both colors throughout the season. Leaves long and beautifully serrated. Splendid for backgrounds, screens, specimens and tall groupings. Mail size, \$1.00 each. Delivered.

TERRALITE BRAND VERMICULITE

All Evergreens respond to mulching and the new wonder mulch—Vermiculite is now available at very reasonable prices. Large 2½ cu. ft. bags, \$1.65 each F.O.B. Atlanta.

MAHONIA FOR SHADE

Leatherleaf Hollygrape. *M. bealei*. Large compound leaves of 7 to 15 holly-like, spiny toothed leaflets of bright shiny green; tough and leathery. Terminal clusters of yellow, bell-shaped flowers in February, followed by clusters of violet berries, similar to small grapes. For foundations and groups in shade. 5 ft.

Heavy mail size, \$1.25 each. Delivered.

NANDINA FOR BERRIES

Domestica. Heavenly Bamboo. Beautiful leafy shrub of medium height, 3 to 4 ft., and of a neat and airy appearance. Has the appearance of dwarf evergreen bamboo. Foliage is lighter green than other evergreens; leaves pink tipped in summer and rich bronzy red in winter. Flaming scarlet berries through the winter with rich red leaves. Especially desirable for foregrounds of foundation and border plantings to relieve the heaviness.

Mail size, 75c each; 3 for \$1.75. Delivered.

Extra large, \$1.00 each; 3 for \$2.75.



Glossy Privet. \$1.00.

SHADE AND ORNAMENTAL TREES

FRANKLINIA ALATAMAHA

The Lost Gordonia. Native of Georgia but now only rarely found in cultivation. Grows to 20 ft., with 6-in. bright green, shining leaves, turning scarlet in fall. Showy 3-in. flowers in leaf-axils in late summer are white and magnolia-like. Specimen lawn trees for well-drained, rich soils. Delivered—Heavy young trees, \$3.95 each. (Only a few available.)



Franklinia alatamaha

GINKGO (Maidenhair Tree)

Very tall Chinese tree with long-stalked, fan-shaped leaves divided in the middle. Of easy cultivation in good soil. A hardy ornamental and street tree. Resinous and deciduous. Survivor of geologic ages. Delivered—mail size, \$1.25 each.



Ginkgo Tree

COLORFUL MAPLES

Norway. European Hard Maple. *Abies platanoides*. Fine for specimens or shade on lawns, streets, and driveways. Large, dark foliage, round and spreading in growth. F. O. B.—4 to 6 ft., \$1.75 each.

Sugar. *A. saccharum*. Long lived; shapely, rounded head of dense foliage and smooth trunk. Leaves are held late and all drop quickly, a lawn advantage. F. O. B.—4 to 6 ft., \$1.95 each.

UMBRELLA CHINABERRY

Old favorite for lawn shade in the South. Too well known for description. Delivered—3 to 4-ft. trees \$1.00 each.

TULIP POPLAR

Tuliptree. *Liriodendron tulipifera*. Fast grower to great height; pyramidal shape. Large, glossy leaves and yellowish green, tulip-shaped flowers. Write for prices.

BLACK LOCUST · ROBINIA

A valuable fast-growing shade tree, for utility as well. Hardy and resistant to pests. F. O. B.—6 to 8 ft., \$1.95 each.

MIMOSA ACACIA · SILK TREE

Albizia julibrissin. Flat-topped, picturesque tree 20 to 25 ft. tall, wide-spreading. Large fern-like leaves give a feathery effect. Flowers are silky pink and thistle-like. Delivered—mail size, 60c each; 3 for \$1.50.

STURDY WATER OAK

Quercus nigra. Stately, massive tree of rounded form, with willowy leaves; often 80 ft. tall. Rapid grower for an Oak. A beautiful lawn or street shade tree. F. O. B.—write for prices.

SYCAMORE · PLATANUS

Rapidly growing shade tree with large leaves of refreshing greenness. Grows well almost anywhere. F. O. B.—write for prices.

NOTE: We have many other kinds of trees and shrubs in too small quantity to list; so write us for such that you do not find and we will do our best to provide them for you.

ELM

Chinese. *Ulmus pumila*. Fastest-growing shade tree of large size with spreading branches. Stands drought, needs little or no attention, the healthiest of the Elm family. Earliest to put on leaves in spring and last to drop them in fall. Rich, bright green foliage; smooth bark. Graceful, stately tree. Wonderful lawn, street or highway tree. Needs good drainage. Delivered—2 to 3 ft., 40c each; 3 for \$1.00. F. O. B.—6 to 8 ft., \$1.50 each. 8 to 10 ft., \$2.50 each. Special planting-size offer Chinese Elms: 10 for \$1.00; 30 for \$2.00; 100 for \$5.00. Delivered. Grow shade quickly and abundantly at these bargain prices.

American. *U. americana*. Of rapid growth, with long, spreading, pendent branches forming giant arches over lawn, road, or street. Tough wood; fine foliage. Permanent shade tree. F. O. B.—5 to 6 ft., \$1.50 each. 6 to 8 ft., \$2.50 each.

WEeping WILLOW

Salix babylonica. Drooping, arching branches. Does well in moist situations. Delivered—2 to 3 ft., 60c each; 3 for \$1.50



Tuliptree (*Liriodendron tulipifera*)

Southern Flowering TREES



Chinese Tulip Magnolia. \$1.75

JAPANESE FLOWERING CRABAPPLE

Malus floribunda. Very shapely small tree. Buds are warm red, opening to light pink, single flowers, delicately shaded and fragrant. In spring, it is a mass of color, the most prolific bloomer of all—and most popular. Delivered—Heavy, \$1.49 each. Extra heavy, \$2.49.

GOLDEN RAIN TREE

Varnish Tree. *Koelreuteria paniculata.* Chinese deciduous lawn tree with glossy divided foliage of fine autumn colors and large terminal panicles of showy, golden yellow flowers that simply cover the tree in June. Flowers are followed by large bladder-like seed-pods. Ultimate height, 20 to 25 ft. Write for prices.



Red Flowering Dogwood. \$1.95

DOGWOOD

Cornus florida. Our native Southern beauty, covered with sheets of white bloom in early spring. Delivered—Mail size, 3 for 75c; 10 for \$1.50; 25 for \$2.50; 100 for \$7.50. F.O.B.—4 to 6-ft. specimens, \$1.50 each.

Double White. *C. florida plena.* Double-flowered form; rare and attractive. Delivered—Heavy, \$2.95 each.

Red Flowering. *C. florida rubra.* Rose pink-flowering. Grafted plants on white stocks. Delivered—Extra strong, \$1.95 each.

Flowering Crabapple. \$1.49

GLORIOUS MAGNOLIAS

All over the South

With Dogwood and Crape Myrtle, Magnolias are the South's most wonderful flowering lawn trees. Huge, strikingly beautiful and colorful blooms thrill everybody. Let Magnolias glorify every home-garden.

Southern. *M. grandiflora.* See page 21.

Chinese. *M. soulangeana nigra.* Deciduous, handsome, early-flowering small tree covered with large tulip-shaped flowers, dark purple outside, lighter inside. For specimen or shrub border. Delivered—Strong plants, \$1.75 each; 3 for \$4.95.

Star. *M. stellata.* Early-flowering shrub or tree similar to Chinese except have most beautiful white star-like blossoms. A superb companion to the Chinese in the shrub border. Delivered—Strong plants, \$2.95 each.



Redbud

REDBUD · JUDAS TREE

Cercis canadensis. 20-ft. tree with carmine-pink flowers along the branches in early spring before heart-shaped leaves appear. Native to our woods. Used the same as dogwood. F. O. B.—4 to 6 ft., \$1.25 each. 6 to 8 ft., \$1.95 each. Mail size, Delivered—3 for 75c; 10 for \$1.50; 25 for \$2.50.

ORNAMENTAL CHERRY

Japanese. Double pink flowers in greatest profusion in early spring. Heavy trees, \$1.95 each. Delivered.

Weeping. Budded on 5-ft. standards. Sweeps of loveliest pink blooms early. F. O. B. Atlanta.—\$10.00 each.

FLOWERING PEACH

Double Red. *Amygdalus persica.* Gorgeous in bloom. Every twig and branch is covered with double red flowers, like rambler roses, in early spring. Delivered—Heavy, \$1.00 each; 3 for \$2.50.

Double White. Same prices.



Double Flowering Peach. \$1.00

To thrive in Southern Gardens

TESTED NEW and PATENTED Roses

Tested in
Our Own
Official
All-America
Trial
Gardens



© N201. Peace, the Miracle Rose



N301. Charlotte Armstrong

N201. PEACE, THE MIRACLE ROSE. HT. *Greatest Yellow.* Patent 591. 1946 All-America Rose Selection. This gorgeous Rose approaches perfection in bud, flower, form, growth and glistening holly-like foliage. Deep golden yellow buds open slowly to huge peony-like exhibition blooms of creamy yellow with delicately pink etched petals, always clear and clean. Spray with Tri-Ogen. \$2.00 each.

N502. Caledonia. HT. *Pure White.* Large long-pointed buds; huge flowers full double, high center, slightly fragrant and borne singly on long, strong stem. Finest ever-blooming white Rose. \$1.00 each.

N202. Condesa de Sastago. HT. *Copper and Yellow.* Highly colored, spice-scented new Spanish novelty. Buds are golden balls, opening brilliant flame. Plants very vigorous in South. Always gets first attention. \$1.25 each.

N308. Crimson Glory. HT. *Deep Crimson.* Patent 105. At last the ideal red Rose. Perfect in color, form, fragrance. Large, full flowers on strong stems. \$1.50 each.

N401. Dainty Bess. HT. *Soft Rose-Pink.* Large, single flowers with wide, delicately crinkled petals and a large cluster of stamens with wine-red filaments. \$1.00 each.

N203. Eclipse. HT. *Yellow.* Patent 172. Best of all new yellow Roses and very well suited for Southern culture. Long slender buds of rich yellow. \$1.50 each.

N402. EDITOR McFARLAND. HT. *Pink.* Long-pointed buds and grows like Radiance, with superior flowers for cutting. Very artistic pink, becoming especially popular in the South. 90c each.

N403. Elizabeth of York. HT. *Cerise-Pink.* Pointed buds; medium-sized flowers borne singly on long stems. Profuse, continuous bloomer. Our Southern favorite. \$1.00 each.

N303. Etoile de Hollande. HT. *Brilliant Red.* Generally known as world's best red Rose. Magnificent size, enormous petals, very fragrant. Free-flowering. 90c each.

N209. Forty-Niner. HT. *Bicolor.* Patent 792. A large, double flower of cherry-red, with the reverse of the petals yellow, faintly washed with pink. Glossy, light green foliage on a 3 to 4-foot, compact plant. \$2.50 each.

N319. TALLYHO. HT. *Rose-Red.* Patent applied for. Urn-shaped bud and large flower. Outside of petals crimson, inside rose-red to pink. Robust, bushy, blooming freely. Spicily fragrant. \$2.50 each.

N301. CHARLOTTE ARMSTRONG. HT. *Cherry-Red.* Patent 455. 1941 All-America Selection. Beautiful long, blood-red buds and glorious flowers. Erect, vigorous, prolific, continuous bloomer. Best new Rose in past ten years and greatest prize-winner. Outstanding. \$1.50 each.

N304. Gloire de Chedane-Guinoisseau. HT. *Red.* Brilliant crimson-red Frau Druschki. Vigorous growth with huge fragrant flowers on long stems. Wonderful. \$1.25 each.

N205. Golden Dawn. Hardy Bush Marechal Niel. HT. *Yellow.* Delightfully fragrant, large buds opening to full double flowers for Southern gardens. \$1.25 each.

N315. Heart's Desire. HT. *Crimson.* Patent 501. The intense fragrance of this Rose has made it a prize-winner. The large, fully double flowers of rich crimson-red are carried on long stems. \$1.50 each.

N415. Picture. HT. *Pink.* Perfect buds and flowers of pure, clear pink. Blooms continuously all summer. Thrives in Southern gardens. \$1.25 each.

N307. Poinsettia. HT. *Brilliant Red.* Huge ideal long pointed buds; glorious flowers. Vigorous tall grower, long stems, and richest scarlet-red. Grand. \$1.25 each.

N305. RUBAIYAT. HT. *Rosy Crimson.* The only All-America Selection for 1947, and truly deserving of this distinction. The beautiful long buds open slowly and are filled with rich perfume. Plant is tall and husky, with a profusion of dark green foliage. \$1.50 each.

N206. Sister Therese. HT. *Yellow.* Long-pointed slender buds of deep chrome-yellow. Upright, heavy-foliaged bush. The best yellow Rose for garden and cutting. 90c each.



N209. Forty-Niner

\$4.45 ALL-AMERICA ROSE COLLECTION \$4.45

Including **Peace**, the most beautiful Rose in the world, **Charlotte Armstrong**, the cherry-color feature Rose, and **Heart's Desire**, the rich red that thrives everywhere. All three All-America Winners sent **Postpaid** for \$4.45 (\$5.00 value).

The World's Finest ROSES FOR THE SOUTH

NOTE: We do not recommend transplanting roses until they are fully dormant. Experts agree December to March plantings are best in the South. Beds may be prepared in early fall to settle by planting time.

HASTINGS' POSTPAID PRICES

Make Your Own Selections

All Good Roses Very Scarce
Order Early

FOR DECEMBER SHIPMENT

90c Roses are any 3 for \$2.45; 12 for \$8.95;
25 for \$17.45; 100 for \$60.00.

\$1.00 Roses are any 3 for \$2.75; 12 for \$9.95

\$1.25 Roses are any 3 for \$2.95; 12 for \$10.95

\$1.50 Roses are any 3 for \$3.95

(Patented Roses Excepted)

CHOICE PINK BUSH ROSES

N404. Betty Uprichard. HT. *Soft Salmon-Pink.* Coppery red buds, opening orange-carmine with salmon reflexes; spicy fragrance. Strong-growing, persistent-blooming and healthy. Magnificent bedding and cutting. Delightful color and long-keeping. 90c each.

N405. Edith Nellie Perkins. HT. *Coppery Orange-Pink.* Large, double flower with fine pointed center; inside of petals salmon-pink, outside coppery red and orange. \$1.00 each.

N402. Editor McFarland. HT. *Pink.* Long-pointed buds and grows like Radiance, with superior flowers for cutting. Very artistic pink, becoming very popular in South. 90c each.

N407. Killarney Queen. HT. *Rich Pink.* Very free flowering. Closer to original in color but fuller (17 petals) and little stronger growth. Practically immune to mildew and best of the beautiful Killarney group. 1934 Sweepstakes, Atlanta Rose Show. 90c each.

N409. Mrs. Charles Bell. HT. *Shell-Pink Radiance.* Lovely blooms of fine globular form and soft salmon shadings. Exactly like its parent, Radiance, except finer, softer color. Third largest selling Rose in America. Just about always in bloom. \$1.00 each.

N410. Paul Neyron. HP. *Dark Lilac-Rose.* Immense blooms of fair form, very double and fragrant. Quite vigorous; strong, rather smooth canes. Largest of all. Very tall and quite thornless. \$1.00 each.

N411. Radiance. HT. *Rose-Pink.* Brilliant, well-formed, globular buds; very fragrant flowers. Splendid grower and wonderful bloomer. Most reliable pink HT. Rose. Best in South and does well for everybody wherever Roses will grow. 90c each.

N415. Picture. HT. *Rose-Pink.* A high-centered flower with abundant petals, reflexed. The color is a velvety clear rose-pink; delicate perfume. Vigorous grower. \$1.25 each.



Golden Dawn (p. 27)



1, E. N. Perkins, Pink; 2, Killarney Queen, Pink; 3, McGredy's Scarlet, Red; 4, Mrs. Charles Bell, Pink; 5, Pres. Hoover, two-toned; 6, Mrs. Pierre S. du Pont, Yellow; 7, Killarney Queen, Pink; 8, Charles K. Douglas, Crimson; 9, Betty Uprichard, Pink; 10, Paul Neyron, Pink; 11, Picture, Pink; 12, Editor McFarland, Pink.

TWO-TONED ROSES

N206. President Hoover. HT. *Pink, Flame, Scarlet, Yellow.* Gold Medal for Best Rose 1930-35, A. R. S. Large flowers with broad, thick petals, very fragrant. Clean, handsome foliage. Retains color. Better than Talisman in size, growth, and flowering. 90c each.

N207. Talisman. HT. Gold Medal for Best Rose 1925-30, A. R. S. Sensation at all shows. Long, perfect buds; flowers have 25 to 28 petals in a blend of colors indescribable but combining gold, apricot, yellow, pink, old-rose or deep rose-pink, all of which brighten and get richer on opening. 90c each.

THE 3 RADIANCE ROSES

\$2.39

The largest selling Roses in the world

One plant each of the 3 most popular, most satisfactory, heaviest, and most continuous flowering Roses in America.

Radiance (pink), **Red Radiance** (rosy red), and **Mrs. Charles Bell** (soft salmon-pink). They are too well known for comment.

One plant each—delivered for \$2.39. 3 each (9 Roses) for \$6.75. 6 each (18 Roses) for \$12.65.

THE WORLD LOVES RED BUSH ROSES

NEW RED ROSES.—See Page 25 for the All-America Rose Selections: Charlotte Armstrong and Rubaiyat, the finest new Roses in many years: Crimson Glory, Etoile de Hollande, Gloire de Chedane-Guinoisseau, Poinsettia, are other glorious red Roses. All are on Page 25.

N309. Ami Quinard. *HT. Dark Red.* Blackish buds; semi-double flowers of unfading crimson-maroon with black luster. Strong, upright, vigorous plant, productive of Rose-scented flowers. 90c each.

N3 0. Charles-K. Douglas. *HT. Crimson-Scarlet.* Fine, long-pointed buds; large, loose flowers, strongly fragrant. Strong branching, grand, unfading red garden Rose. Free from disease. 90c each.

N312. Louis Philippe. *China. Red.* Old favorite scarlet-red Rose originated 1834. Very resistant to disease, growing very rank farther South. A fine old Rose. \$1.25 each.

N313. McGredy's Scarlet. *HT. Scarlet.* Big rich scarlet buds, opening to show orange base and turning lighter to rose. Heavy, perfect bloomer on vigorous growth. \$1.25 each.

N314. Red Radiance. *HT. Rose-Red.* Big, globular flowers on strong canes, which are freely produced until frost. Excellent foliage. The most popular Rose in America and one that gives everyone satisfaction plus. 90c each.

YELLOW BUSH ROSES

TO DELIGHT EVERYONE

N205. Golden Dawn. Hardy Bush Marechal Niel. *HT. Yellow.* Delightfully fragrant, large buds opening to full double flowers for Southern gardens. \$1.00 each.

N208. Lady Hillingdon. *T. Saffron-Yellow.* Slender, pointed buds and elegantly cupped flowers of deep yellow, paling at edges; fragrant. Erect, with perfect foliage. Simply exquisite. \$1.00 each.

N209. Luxembourg. *HT. Rich Apricot.* Orange-centered, fragrant, exquisitely shaped. Beautiful for cut-flowers. Similar to Sunburst but with more pink and stronger grower. 90c each.

N210. Mrs. Pierre S. du Pont. *HT. Golden Yellow.* Bud is long-pointed, rich reddish gold, almost orange at petal bases. Exceptional bloomer on low, healthy, disease-resistant bushes. Winner of many gold medals and a great yellow. \$1.25 each.

N206. Sister Therese. *HT. Yellow.* Long-pointed, slender buds of deep chrome-yellow touched with orange-carmine. Upright, heavy-foliaged plant of spreading habit. A very free bloomer. Slightly fragrant, semi-double, cupped. Leathery, bronzy leaves. The best yellow Rose for garden and cutting. 90c each.



1, McGredy's Scarlet, Red; 2, Killarney, White; 3, Eclipse, Yellow; 4, Golden Dawn; 5, White Maman Cochet, 6, C. K. Douglas, Red; 7, Mrs. P. S. du Pont, Yellow; 8, Luxembourg, Yellow; 9, Talisman, Two-toned; 10, K. Auguste Viktoria, White; 11, Pres. Herbert Hoover, Two-toned; 12, Lady Hillingdon, Yellow.

BEST WHITE BUSH ROSES

See Caledonia on Page 25. The new White Radiance is creating quite a sensation and is listed across the bottom of this page. We hope you like it, too.

N504. Double White Killarney. *HT. Pure White.* Long-pointed buds opening enormous petals. Vigorous grower and very free-flowering. More double than old variety. 90c each.

N505. Frau Karl Druschki. *HP. White American Beauty.* Magnificent, snow-white, deep, firm petals; absolutely perfect shape; no fragrance. Best white Rose in existence. Tall, free bloomer. \$1.00 each.

N506. K. Auguste Viktoria. *HT. Creamy White.* Perfect buds and flowers, lemon-tinted at center; fragrant. Hardy and rather vigorous. Extremely lovely and the indispensable white. \$1.00 each.

N503. White Maman Cochet. *T. White.* Often pink flush on outer petals; fully double, very large, perfect. Very free bloomer. Disease-resistant, vigorous, spreading growth. \$1.50 each; 3 for \$3.95.

GENUINE WHITE SPORT OF WORLD-FAMOUS RADIANCE ROSE

N507. WHITE RADIANCE. *HT. White.* A true white development from the most popular group of Roses in the world. Same heavy, vigorous, healthy growth and a superb semi-double white. \$1.00 each; 3 for \$2.75.



A well-arranged Rose-Garden.

Glorious SOUTHERN CLIMBING ROSES

Hardy, 2-year-old, well-branched, Nursery-grown, budded Rose plants. Set Climbing Roses about 6 feet apart. They usually last for years, being very vigorous and requiring less care than bush Roses.

All Climbing Hybrid Tea (Cl. HT.) Climbing Tea (Cl. T.) and Climbing Polyantha (Cl. Poly.) Roses are so-called Everblooming Roses. Hybrid Wichuraiana (HW.) Roses are seasonal mass bloomers.



N630. Climbing Etoile de Hollande. \$1.25 each; 3 for \$3.25



N623. Golden Climber. \$1.50

N634. Red Cherokee. *Laevigata.* *Rosy Red.* Red form of the famous Southern or white Cherokee. For fences and naturalizing. Single flowers. \$1.50 each.

N651. Silver Moon. *HW.* *White.* Greatest white climber. Long creamy buds, nearly single gigantic flowers in sprays. Extra vigorous, growing 15 to 20 feet in one season. Perfect foliage. 90c each.

N652. White Cherokee. *Laevigata.* *White.* Georgia State Flower. Fragrant, graceful, artistic, showy, 3-in. single flowers with golden stamens. Fine in South for fences and naturalizing. \$1.50 each.

N628. Pink Cherokee. *Laevigata.* *Pink.* A very lovely pink flowering true Cherokee Rose. Showy, large, single pink flowers, rich golden stamens. \$1.50 each.

N630. Climbing Etoile de Hollande. *Cl. HT.* *Rich Red.* The world's best red Rose, now in a vigorous-growing climber. A sight in bloom to take your breath. Glorious big double flowers, fragrant and grand for cutting too. \$1.25 each; 3 for \$3.25; 12 for \$10.95.

N631. Blaze. *Cl. HT.* *Red.* Patent 10. Brilliant scarlet-crimson; resembles and called the everblooming Paul's Scarlet. Main show is in spring with recurrence in fall. \$1.50 each.

N640. Climbing Dainty Bess. *Cl. HT.* *Rose-Pink.* Huge single flowers of 6 petals, in enormous clusters. Stronger than bush Dainty Bess, the finest and most thrilling single Rose. \$1.00 each.

N650. Climbing K. A. Viktoria. *Cl. HT.* *White.* Very double, pure white, perfectly formed flowers with a faint lemon center. Moderately strong climber and preferred to the bush form. \$1.00 each.

N620. Climbing Lady Hillingdon. *Cl. T.* *Yellow.* Semi-double, fragrant, deep apricot-yellow. Vigorous climbing plant. \$1.00 each.

N640. Climbing Picture. *Cl. HT.* *Pink.* Patent 524. A true everblooming climbing form of the most exquisite pure pink Rose. Very strong. \$2.00 each.

N633. Climbing Red Radiance. *Cl. HT.* *Rose-Red.* Climbing form of America's most popular Rose. Big, globular flowers on fine cutting stems. Just as fine as Radiance and deeper color. Order early. \$1.25 each.

N641. Climbing Radiance. *Cl. HT.* *Rose-Pink.* Climbing form of this most satisfactory of all pink Roses. In great demand and stock is limited. \$1.25 each.

N621. Climbing Sunburst. *Cl. HT.* *Yellow.* Cupped flowers of cadmium-yellow, varying toward orange. \$1.00 each.

N622. Climbing Talisman. *Cl. HT.* *Red and Gold.* A glorified Talisman, of stronger growth, larger and better flowers on stronger stems for cutting. Beautiful long-pointed buds and the most striking bicolor effect of all Roses. \$1.00 each.

N623. Golden Climber. *Cl. HT.* *Golden Yellow.* Patent 28. Gorgeous Tea-like blooms on long stems for cutting. Slow growth to start. \$1.50 each.

N644. Kitty Kininmonth. *Cl. HG.* *Pink.* Very large, semi-double flowers of deep pink, with many stamens. Rampant climber. \$1.25 each.

N624. Marechal Niel. *Cl. Noisette.* *Golden Yellow.* Lovely buds and flowers of deep golden yellow; double and extremely fragrant. Strong growth and abundant bloom, not recurrent. Tender but a model of beauty and fragrance. \$1.75 each.

N643. Mary Wallace. *HW.* *Bright Pink.* Large, very bright pink suffused shining gold; double, fragrant. Vigorous (10 to 15 ft.). Superb foliage. Early. \$1.00 each.

N625. Mermaid. *HB.* *Ivory-White.* Absolutely beautiful, immense single flowers. Pale yellow with huge clusters of amber stamens. Clusters of buds on tips of new growth. Glistening foliage. \$1.50 each.

SPECIAL OFFER!

The Most Brilliant, Glowing, Colorful, of All Climbing Roses

Plant them to cover terraces, trellises, mail-boxes, and garages. Outline the bush Rose-garden with climbers for background and enclosure. These glorious new climbers bring the most colorful display to the garden.

N635. Paul's Scarlet Climber. *HW.* *Red.* Intense scarlet flowers of fine shape; brightest and purest red climber. Midseason. Excellent pillar Rose. Blooms in clusters and lasts several weeks. Easily the best red Climber; holds its color. Cover your fences with it. 79c each.

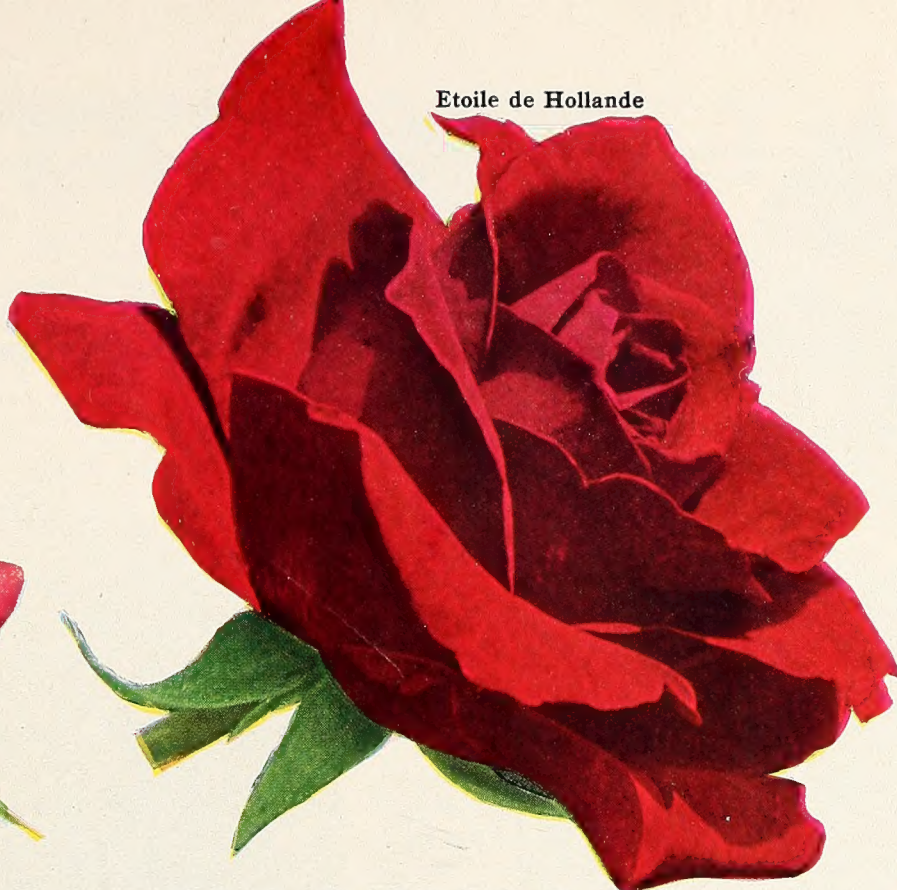
5 for \$3.45 10 for \$6.45
50 for \$28.75 Delivered



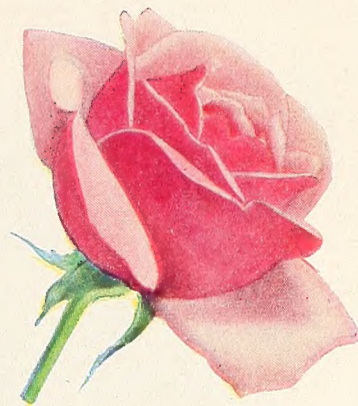
N635. Paul's Scarlet Climber



Condesa de Sastago



Etoile de Hollande



Pink Radiance



Red Radiance



Editor McFarland

HASTINGS' Special Dixie Rose Collection

INCLUDING FAMOUS ALL-AMERICA ROSE PEACE

A GLORIOUS COLLECTION OF PROVEN PERFORMANCE, **\$7.95** POST-PAID
EVERBLOOMING ROSES. ALL FOR.

THESE Roses are the choices of experts for the beginner or for the more experienced grower, as they are superbly adapted to all sections of the South, where they have been thoroughly tested for many years. These are strictly top-grade Southern-grown Roses and it would certainly be to your advantage to place your order at once to avoid disappointment and delay.

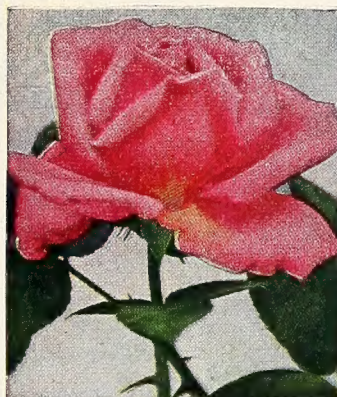
- N403. ELIZABETH OF YORK
- N402. EDITOR MCFARLAND
- N506. KAISERIN A. VIKTORIA
- N314. RED RADIANCE
- N411. PINK RADIANCE
- N303. ETOILE DE HOLLANDE
- N206. PRES. HERBERT HOOVER
- N202. CONDESA DE SASTAGO
- N201. PEACE



President Herbert Hoover



Kaiserin Auguste Viktoria



Elizabeth of York



Peace

POLYANTHA AND FLORIBUNDA ROSES

Sometimes called Baby Ramblers, Polyanthas and Floribundas, are bushy Everblooming Roses, blooming profusely throughout the entire growing season. They bear small to medium flowers in immense, many-flowered clusters, often blanketing the bush. They are very hardy.

N413. Baby Doll—Tip-Top. Yellow and pink to deep rose petal tips in an exquisite blend—a three-tone coloring. Distinct, shapely buds and reflexed flowers. Extra strong, tall and bushy. \$1.25 each.

N412. Cecile Brunner. Pink. The Sweetheart Rose. Baby pink button-hole buds; 15-inch bushy plants. \$1.50 each.

N613. Climbing Cecile Brunner. Pink. Climbing form of above. Vigorous, everblooming. \$1.50 each.

N414. Pinocchio. Salmon-Pink. Patent 484. Lovely little buds of Hybrid Tea form. Dwarf, bushy. \$1.25 each.

N316. Red Lafayette. Bright Red. Large, semi-double, striking light crimson; open, frilled. Blooms profusely. \$1.25 each.

HASTINGS' DIXIE ROSES

ACCLIMATED ROSES—On Hastings' Plantation we grow many thousands of Everblooming and Climbing Roses. All are budded on strong roots outdoors, are strong plants, two years old, and have been blooming profusely all summer long. They are of the finest garden varieties.

We recommend these strong plants for all sections of the United States where Roses can be grown, particularly for the South.

ALL PRICES POSTPAID—We will ship plants to you as late as it is safe to plant them. Set plants in their permanent places as soon as received from us so they may become well established before growing weather starts in spring. Shipments outside the United States, postage extra.

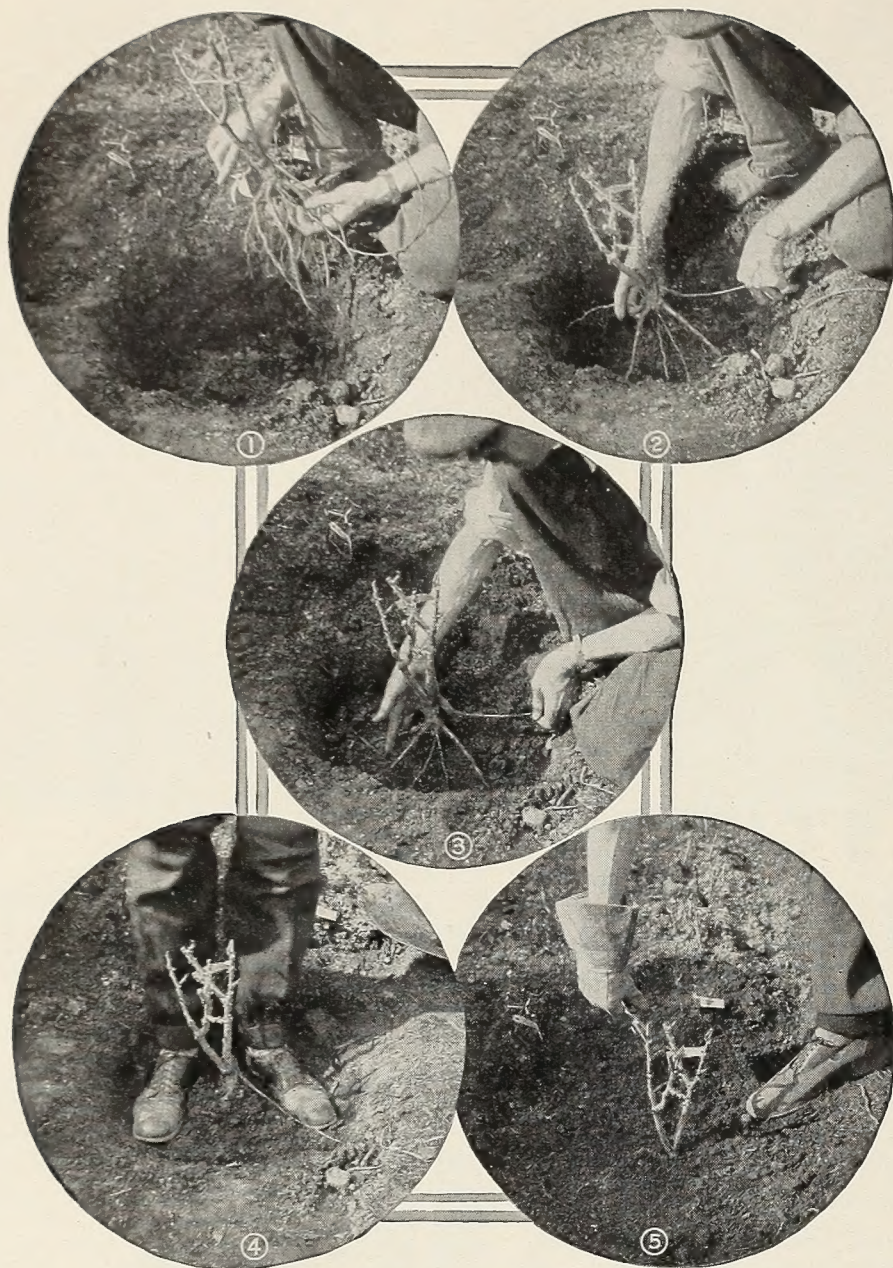
WHEN TO PLANT—December 1 to March 15 is the time to plant Roses. We can supply these fine plants until leaf-growth starts in the spring, about April 1, but better success is had with earlier planting. Late fall or winter planting is by far more satisfactory.

HOW TO PLANT—Upon receipt of plants, open the bundle and place in a pail of water for a few hours. Don't expose to sun or wind. After removing from the water, trim off broken or damaged roots. *We do main pruning for you before shipment.* Soil should be well prepared before plants arrive. Spade a good garden soil 30 inches deep and thoroughly mix Sheep Manure and Peat Moss to 50 per cent of the upper 12 inches of soil. Plant in late afternoon or on a cloudy or rainy day if possible. Set Bush Roses 18 to 30 in. apart, except Hybrid Perpetuals, which need about 3 feet of space. Climbers need about 6 feet of space between plants.

Dig a hole large enough to spread the roots without crowding and deep enough to cover a little deeper than plants were in the nursery. *Budded Roses must be planted so the scar or swelling left by bud is beneath the surface.* In filling with soil, shake plant lightly, so soil gets all around the roots, then fill hole completely and firm soil so plant is set solid. Soak well with water. Further pruning back may be done before new leaf-growth starts in spring.

CULTIVATION—Cultivate frequently, about 1 in. deep, without disturbing the roots. Mulch entire beds with 2-in. layer of peat moss. This protects roots from sun, gives them air and conserves soil-moisture. When watering, soak the ground as deep as roots penetrate, about 18 in., and don't water again until surface is quite dry. Don't just sprinkle. Spray regularly with Tri-ogen, all-purpose rose spray or dust with Rose Dust.

All Tea (T), Hybrid Tea (HT) and Climbing Hybrid Tea (Cl. HT) Roses are so-called Everblooming Roses. Hybrid Perpetuals (HP) and Hybrid Wichuraiana Climbers (HW) are seasonal mass bloomers.



Use care in Rose-planting for best results

JOIN THE AMERICAN ROSE SOCIETY. We will gladly send full information upon request

VISIT OUR MODERN RETAIL STORES IN ATLANTA, BIRMINGHAM, CHATTANOOGA AND CHARLOTTE.

Read Directions for Ordering Nursery Stock

NOTICE: We cannot accept orders for balled plants, either for express or mail shipment, due to prohibitive costs.

Terms Cash Send remittance with your order by post-office or express money order, registered mail or bank draft. This insures attention and avoids delays. Absolutely no plants or other perishable goods will be sent C. O. D.

Shipping Charges We pay all transportation charges except on *Not Prepaid* or *F. O. B.* or *B. & B.* (balled and burlapped) plant items listed in this catalog. Such not-prepaid charges will be collected by transportation company upon delivery of plants. Shipments outside the United States, postage extra.

Shipping Methods Shipping directions should be plainly written on our order sheets—by mail or express. When no directions are given, we ship according to our best judgment. Usually we advise mail or express to get plants to you in best condition. Where we make a Delivered price, we ship prepaid by mail or express, at our discretion.

We mail you a notice when your express shipment is made so you may get it as soon as it arrives.

Time of Shipment Unless instructed otherwise, orders received during the shipping season will be sent as soon after order is received as possible. Orders booked in advance will be shipped as soon as possible after the shipping season opens.

Shipping and Planting Season Seeds are shipped whenever ordered unless we are instructed to ship at some later date. Fall planting bulbs are ready for shipment from about Sept. 1 to Jan. 1.

Shrubs, Roses, Trees and other plants grown in the open field are ready for shipment as soon as growth is checked in the fall about Nov. 15 to Dec. 1 and may be shipped until growth starts in the spring about March 25. Write for free seed and bulb catalog.

About Warranty H. G. Hastings Co. give no warranty, express or implied, as to the productiveness of seeds, plants or bulbs they send out, and will not be in any way responsible for the crop. If purchaser does not accept the goods on these terms, they are at once to be returned, and any money that may have been paid for them will be refunded. Our liability in all instances is limited to the purchase prices.

Claims We propose to furnish you with nursery stock according to your order, true to name, well rooted, well grown, properly packed and delivered to the forwarding companies in first-class condition. If, by any possibility, errors should occur, they will be promptly rectified if claim is made within ten days after receipt of goods. We cannot accept any responsibility for soil, planting, or seasonal conditions over which we have no control. We are just as anxious as you are for our stocks to be absolutely satisfactory in every way, so treat your plants with the care they deserve.

SEND ALL MAIL ORDERS DIRECT TO H. G. HASTINGS CO., ATLANTA 2, GEORGIA. WE HAVE NO AGENTS

CHINESE CHESTNUTS!

BLIGHT-RESISTANT

The South's Future Cash Crop

Plant now to get in on the ground floor. Harvest crops within 3 to 4 years—more and more as the trees develop. Successful everywhere except Southern Florida!

Sweet, delicious, meaty nuts sell on sight and are even larger and sweeter than native chestnuts which have now all but completely disappeared.

Authorities recommend setting trees 30–40 feet apart, planting 3 or more to insure crossing necessary for heaviest nut production in small plantings. Ideal for yard planting.

Commercial groves are producing heavy crops *every* year at good profits. Plant 27 trees per acre set 40 feet apart each way utilizing open spaces for summer and winter soil building legumes until trees are too large.

Pictures show the tremendous productive ability of true blight-resistant Chinese Chestnuts the only kind we handle. We have grown a splendid crop this year from selected nuts from heavy bearing trees and offer well rooted trees all ready for setting.



Bursting with profits!

100 for \$60.00

25 for \$15.75

12 for \$8.75

3 for \$2.50

DELIVERED

**PLANT 27 TREES PER
ACRE (40 ft. x 40 ft.)**



Cash in with crops like this!



**Plant 2 or more to insure
good pollenization**

Loaded with Chestnuts the fourth year



It Stays Green the Year 'Round

Hastings' DIXIANA 6

LAWN GRASS

FOR SUN AND SHADE.

Fall Planting
is Best!

2 lbs. \$1.90

5 lbs. (for 1000 sq. ft.) \$4.50

10 lbs. \$8.50 25 lbs. \$20.00

50 lbs. \$38.75

100 lbs. \$75.00

For the first time in many years we have formulated a new blend including new grasses and the best of the old to give you a truly *permanent lawn* in sun and shade and in *all* sections of the South with possible exception of tropical areas and those with salt spray on the coast.

The rate and beauty of growth will depend upon the richness of the soil, good preparation, fertilization, careful planting and moisture until it becomes established after which it needs only reasonably good care to last for years! Write for free lawn bulletin today!

HASTINGS' DIXIANA 6 LAWN GRASS is our own special formula blend and is sold only in sealed bags for your protection.

FOR OTHER GRASSES AND LAWN CLOVER—WRITE FOR PRICE LISTINGS

H. G. HASTINGS CO., ATLANTA 2, GEORGIA